

Your Project Calculations



Project Name: MTSOLAR_0682EKH4CH17JA RevB

S3D Model Link:

https://platform.skyciv.com/structural?preload_name=MTSOLAR_0682EKH4CH17JA%20RevB&preload_path=Shared%20Enterprise%20Folder/MT_Solar_Projects/6_2023

Public Model Link:

https://platform.skyciv.com/structural-viewer?project_id=h4RaxDXdhm2MM5KWxASue7BdS4WEOFGjcAar3E27BUucpk3rgoORSOpPxtVpRqu

Array Specification

Product:	Beam
Unique ID:	1P-0-8TOP-XD-57-L-4Hx3W-HJG5
Duty Classification:	XD
Module Width:	40.80 in
Module Length:	69.40in
Number of Rows:	4
Number of Columns:	3
Total Number of Modules:	12
Desired Tilt Angle:	35
Front Edge Clearance:	3
Total Array Height at Tilt:	10.85 ft
Total Frame Length:	17.00 ft
Frame Weight:	879 lbs
Array Dimensions N/S:	13.77 ft
Array Dimensions E/W:	17.60 ft
Rail Length:	165.20 in
Rail Spacing:	2.89 ft
Rail Check:	

Support Specifications

Pole Size:	8in Pipe Sch 40
Pole Length above Grade:	6.95 ft
Number of Poles:	1
Pole Spacing:	0

Foundation Specifications

Foundation Type:	Round
Foundation Dimensions:	Ø36 in
Foundation Depth (below grade):	Pile 1: 8.00 ft
Foundation Volume:	2.094 y ³
Foundation Result:	PASSED
Mount Twist:	0.000007 kip

Site Info

Risk Category:	I
Exposure:	C
Soil Classification:	sand
Site Location:	Lyndeborough, NH, USA
Wind Speed:	105 mph
Snow Load:	80 psf
Design Uplift Pressure:	Multiple pressures
Design Downforce Pressure:	Multiple pressures
Design Snow Pressure:	0.030790 ksf



Design Disclaimer

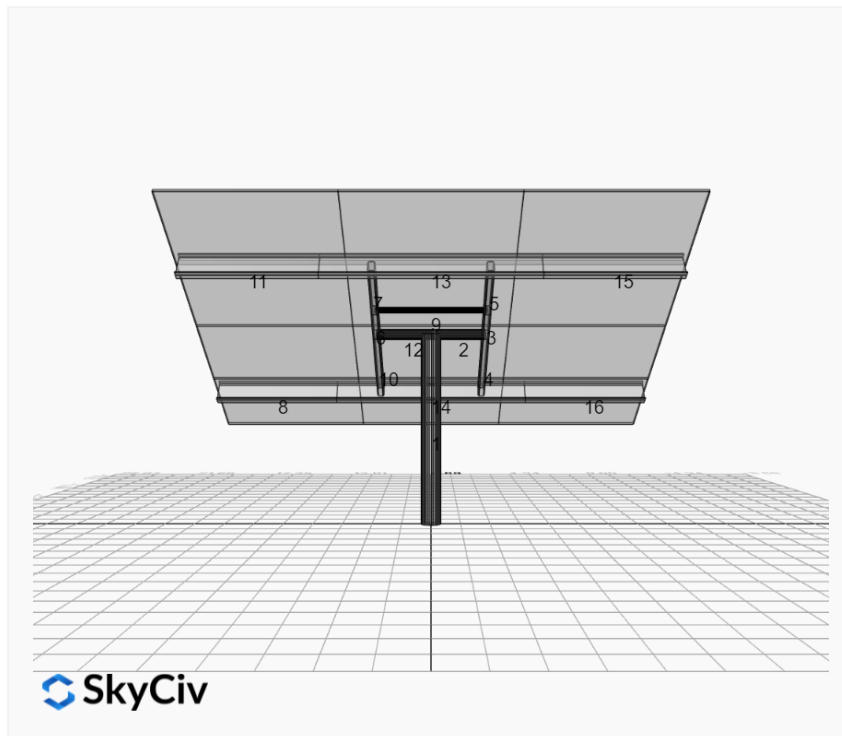
This software should be used for preliminary designs and should not be used as a final design unless reviewed, verified and designed by a qualified structural engineer.

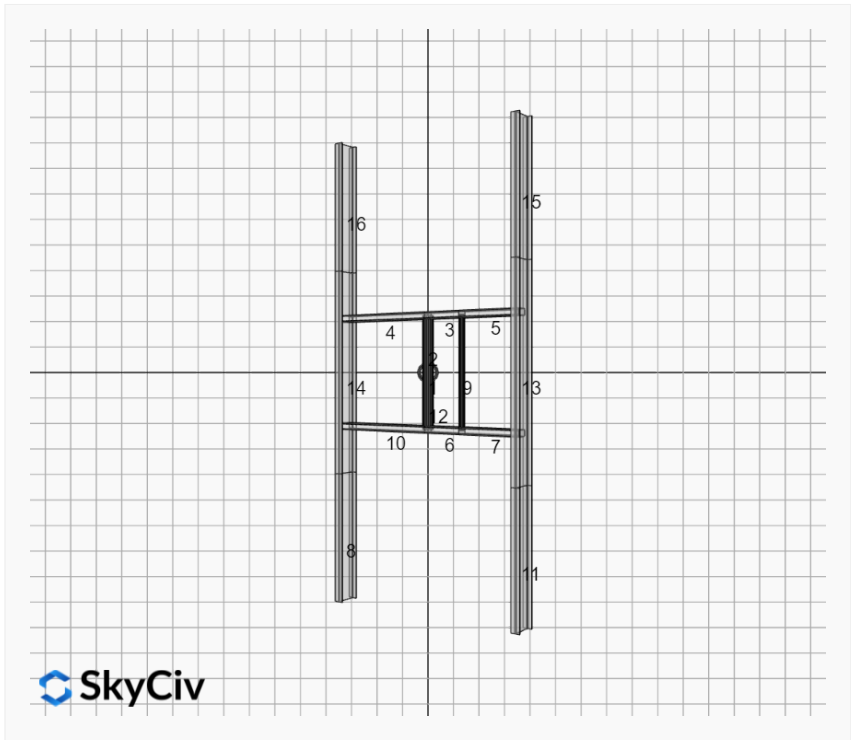
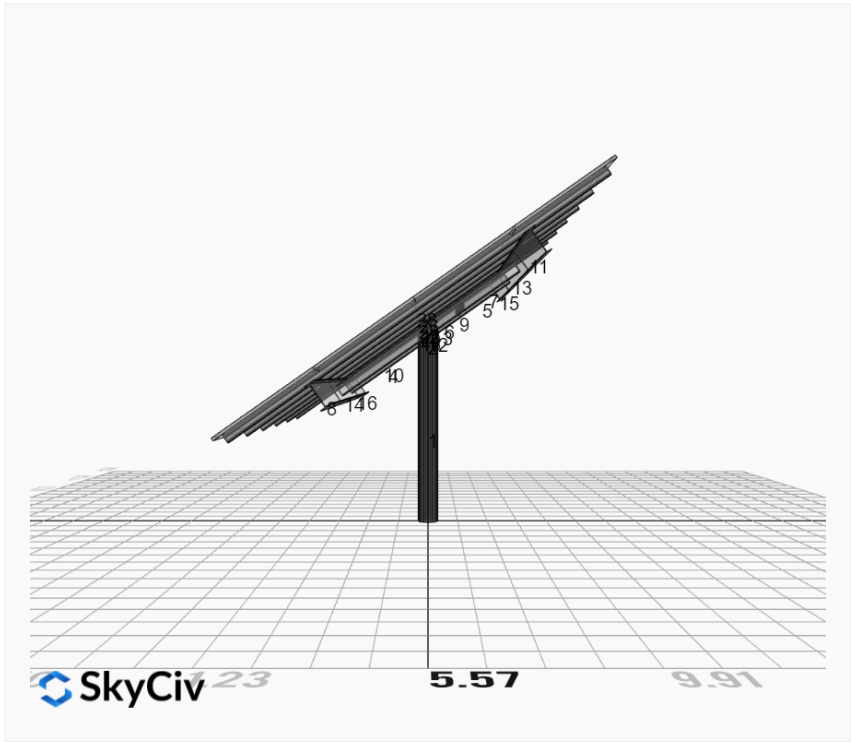
AutoDesigner Input

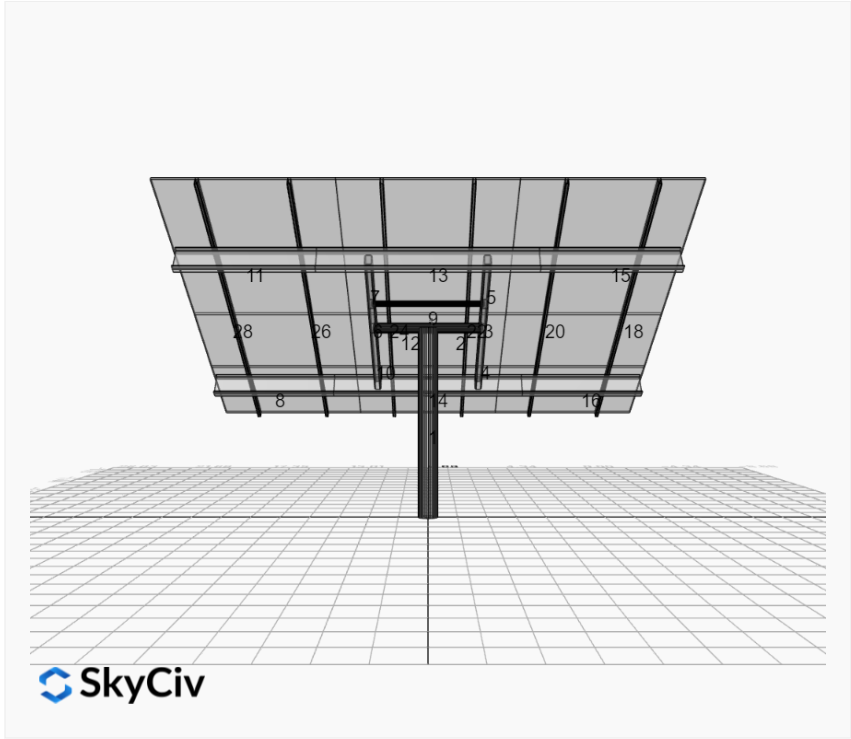
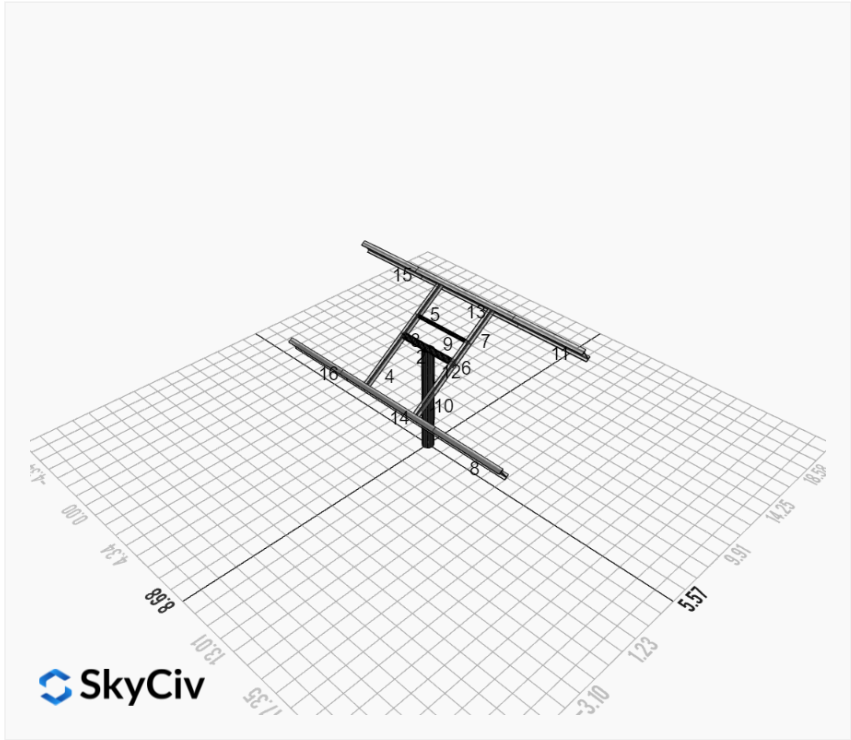
```
{
  "wind_speed_override": 105,
  "snow_load_override": 80,
  "direct_snow_load": false,
  "product_type": "Beam",
  "project_id": "MTSOLAR_0682EKH4CH17JA RevB",
  "site_address": "Lyndeborough, NH, USA",
  "module_width": 40.8,
  "module_length": 69.4,
  "number_rows": 4,
  "number_columns": 3,
  "pole_mount_section": "4_40",
  "core_pipe_width": 65,
  "core_pipe_section": "2_40",
  "adjuster_section": "2_40",
  "core_beam_height": 65,
  "core_beam_section": "HSS3x2x1/8",
  "main_pipe_section": "2_12GA",
  "pole_spacing": 15,
  "tilt_angle": 35,
  "ground_clearance": 3,
  "risk_category": "I",
  "exposure_category": "C",
  "frame_duty_override": "auto",
  "pole_override": "auto",
  "soil_type": "sand",
  "foundation_type": "Round",
  "foundation_size": 36,
  "check_rails": true
}
```

Design Notes:

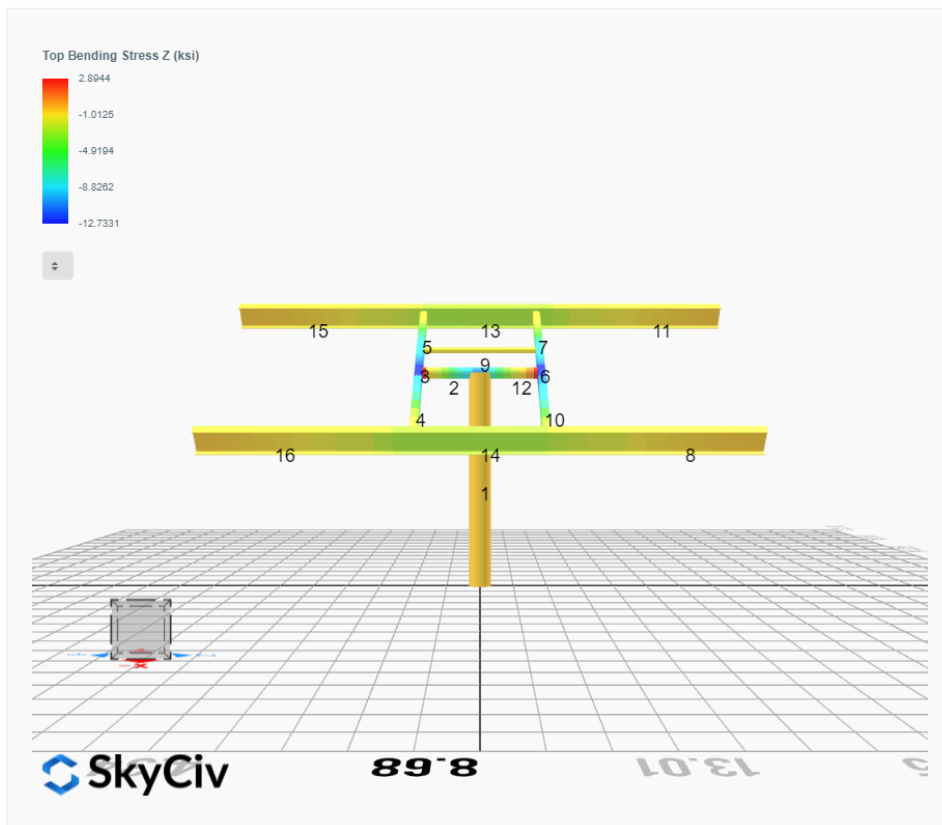
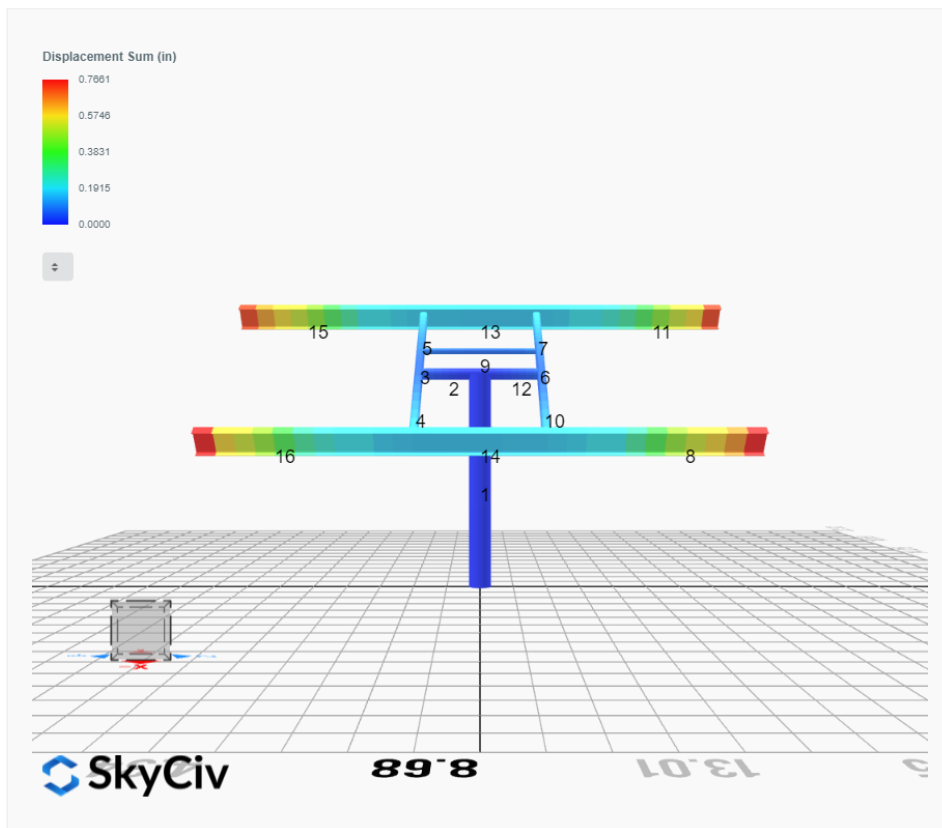
- AISC Deflection checks are set to L/1 due to structure design intent
- Foundation Design and Sizing is approximate only

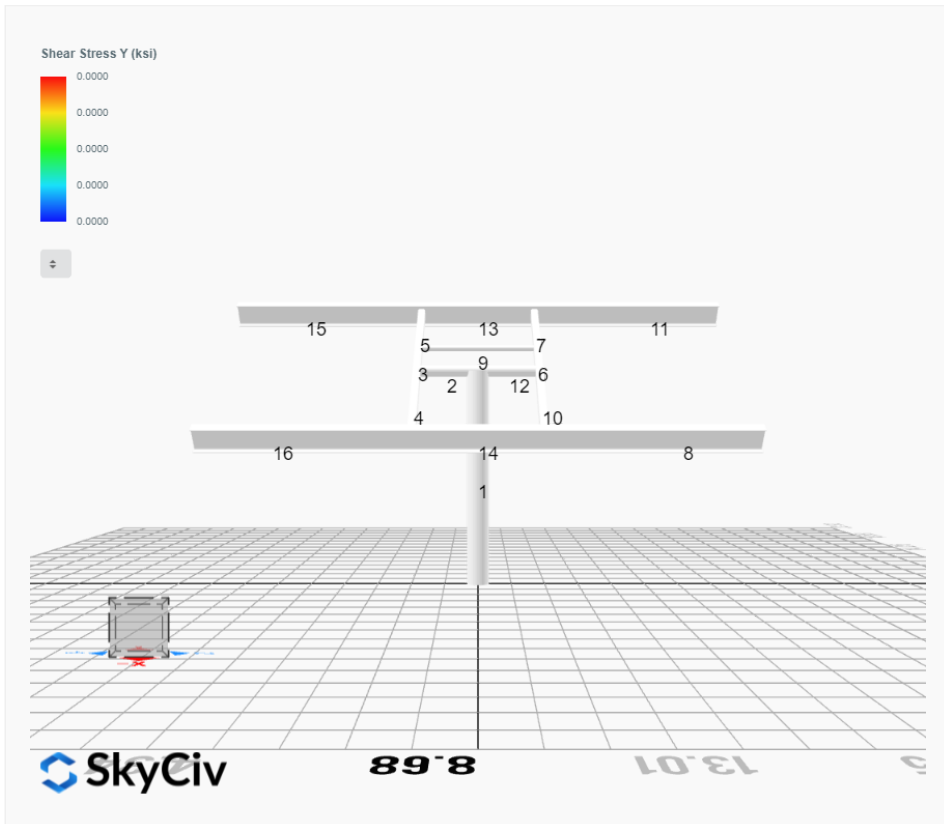
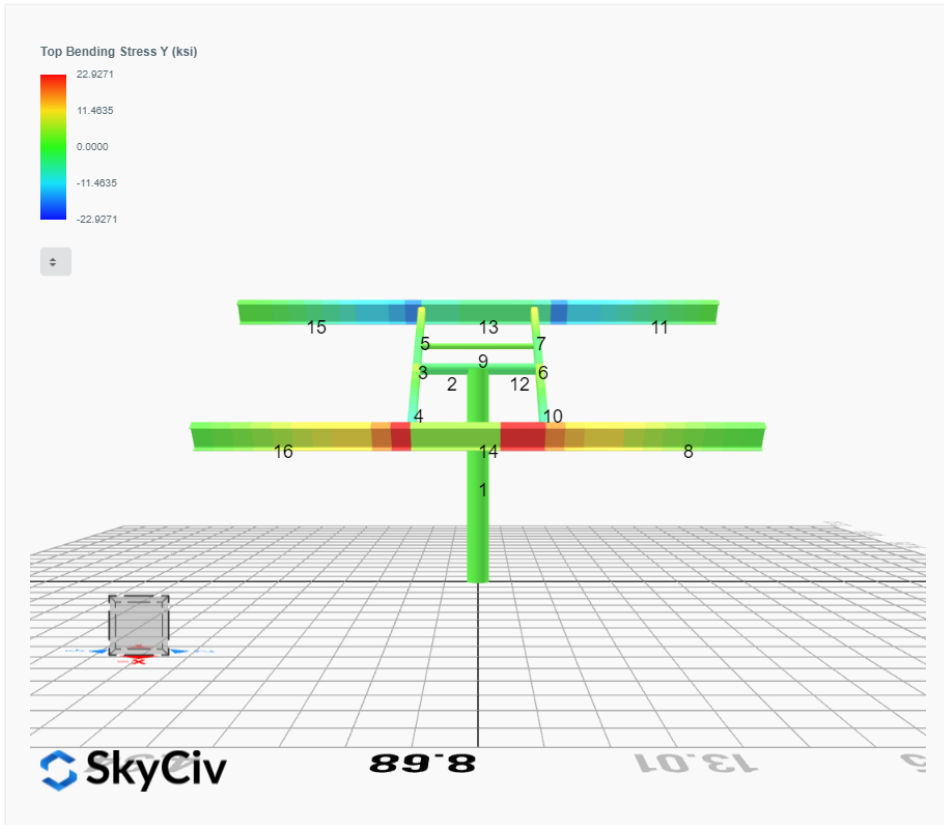


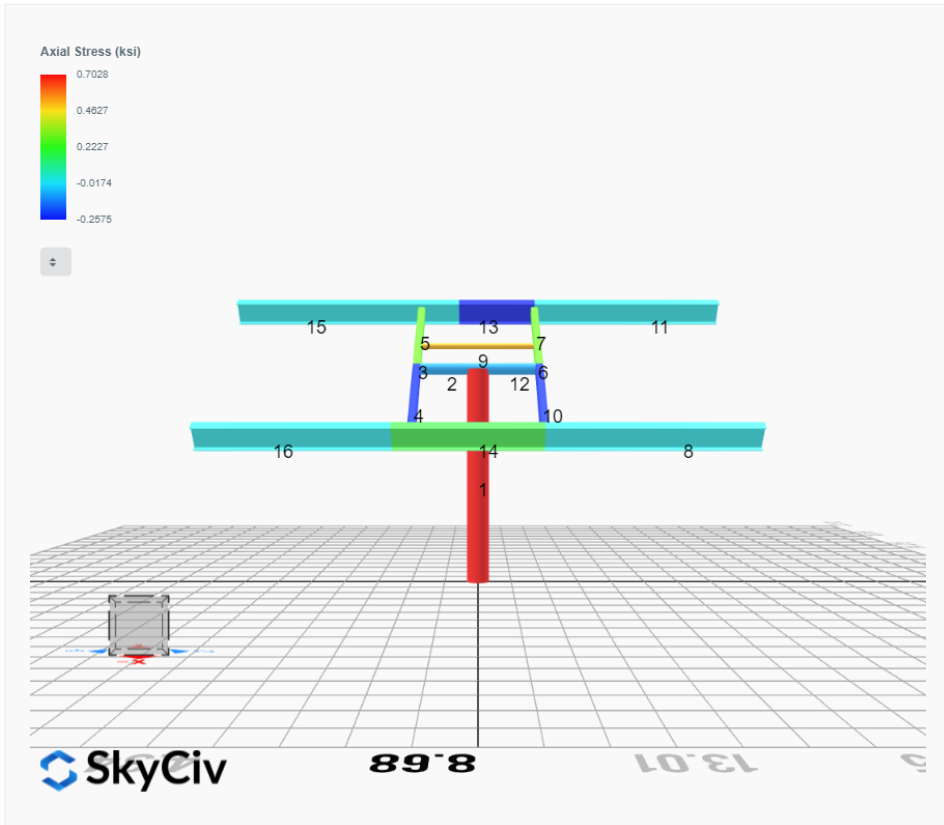




FEM Results (Envelope Worst Case for each member)







Reaction Forces for Foundation 1 (Node ID#1), (kip, kip-ft)

ASD Load Combination Results

Name	Fx	Fy	Fz	Mx	My	Mz
ULS: 1. D	0.0000	2.0280	-0.0000	0.0000	-0.0000	0.0279
ULS: 2. D + L	0.0000	2.0280	-0.0000	0.0000	-0.0000	0.0279
ULS: 3. D + (S or Lr or R)	0.0000	7.9306	0.0000	0.0000	-0.0000	0.0616
ULS: 3. D + (S or Lr or R)	0.0000	2.0280	-0.0000	0.0000	-0.0000	0.0279
ULS: 4. D + 0.75L + 0.75(S or Lr or R)	0.0000	6.4550	0.0000	0.0000	-0.0000	0.0532
ULS: 4. D + 0.75L + 0.75(S or Lr or R)	0.0000	2.0280	-0.0000	0.0000	-0.0000	0.0279
ULS: 5b. D + 0.7E	0.0000	2.0280	-0.0000	0.0000	-0.0000	0.0279
ULS: 6b. D + 0.75L + 0.75(0.7)E + 0.75S	0.0000	6.4550	0.0000	0.0000	-0.0000	0.0532
ULS: 8. 0.6D + 0.7E	0.0000	1.2168	-0.0000	0.0000	-0.0000	0.0167
ULS: 5a. D + 0.6W_Wind downforce Case A only	-2.9822	6.2870	-0.0000	0.0000	-0.0000	21.2206
ULS: 5a. D + 0.6W_Wind downforce Case B only	-2.9822	6.2870	-0.0000	0.0000	-0.0000	21.2206
ULS: 5a. D + 0.6W_Wind uplift Case A only	2.5162	-1.5656	0.0000	0.0000	-0.0000	-17.3407
ULS: 5a. D + 0.6W_Wind uplift Case B only	2.0969	-0.9667	-0.0000	0.0000	-0.0000	-22.9220
ULS: 6a. D + 0.75L + 0.75(0.6)W + 0.75(S or Lr or R)_Wind downforce Case A only	-2.2367	9.6493	-0.0000	0.0000	-0.0000	15.9477
ULS: 6a. D + 0.75L + 0.75(0.6)W + 0.75(S or Lr or R)_Wind downforce Case B only	-2.2367	9.6493	-0.0000	0.0000	-0.0000	15.9477
ULS: 6a. D + 0.75L + 0.75(0.6)W + 0.75(S or Lr or R)_Wind uplift Case A only	1.8872	3.7598	0.0000	0.0000	-0.0000	-12.9733
ULS: 6a. D + 0.75L + 0.75(0.6)W + 0.75(S or Lr or R)_Wind uplift Case B only	1.5727	4.2090	-0.0000	0.0000	-0.0000	-17.1592
ULS: 6a. D + 0.75L + 0.75(0.6)W + 0.75(S or Lr or R)_Wind downforce Case A only	-2.2367	5.2222	-0.0000	0.0000	-0.0000	15.9224
ULS: 6a. D + 0.75L + 0.75(0.6)W + 0.75(S or Lr or R)_Wind downforce Case B only	-2.2367	5.2222	-0.0000	0.0000	-0.0000	15.9224
ULS: 6a. D + 0.75L + 0.75(0.6)W + 0.75(S or Lr or R)_Wind uplift Case A only	1.8872	-0.6672	0.0000	0.0000	-0.0000	-12.9986
ULS: 6a. D + 0.75L + 0.75(0.6)W + 0.75(S or Lr or R)_Wind uplift Case B only	1.5727	-0.2180	-0.0000	0.0000	-0.0000	-17.1845
ULS: 7. 0.6D + 0.6W_Wind downforce Case A only	-2.9822	5.4758	-0.0000	0.0000	-0.0000	21.2094
ULS: 7. 0.6D + 0.6W_Wind downforce Case B only	-2.9822	5.4758	-0.0000	0.0000	-0.0000	21.2094
ULS: 7. 0.6D + 0.6W_Wind uplift Case A only	2.5162	-2.3768	0.0000	0.0000	-0.0000	-17.3519
ULS: 7. 0.6D + 0.6W_Wind uplift Case B only	2.0969	-1.7779	-0.0000	0.0000	-0.0000	-22.9332

Worst Case Reactions LRFD

These calculations are taken directly from the FEA via SkyCiv and are used in the Concrete Checks of the Foundation Module.
Note: Worst case values are assumed as downforce wind load cases.

Result	Value (kip, kip-ft)
Axial	15.4271
Shear X	-4.9704
Shear Z	0.0000
Moment X	-0.0000
Moment Y (Twist)	0.0000
Moment Z	38.5000

Worst Case Reactions ASD

These results are taken from the worst case values in the above table and are used in the Soil Checks in the Foundation Module.
Note: Worst case values are assumed as downforce wind load cases.

Result	Value (kip, kip-ft)
Axial	9.6493
Shear X	-2.9822
Shear Z	-0.0000
Moment X	0.0000
Moment Y (Twist)	0.0000
Moment Z	22.9332

Project Details

Design Code: AISC 360-16 LRFD
 Provision: LRFD
 Country: United States
 User Name: sales@mtsolar.us
 Unit System: imperial

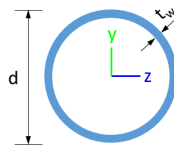


Design Input Information

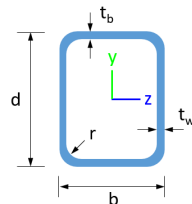
Design Factors			
Φ_t	Φ_c	Φ_b	Φ_v
0.9	0.9	0.9	0.9

Design Materials			
ID	E (ksi)	F_y (ksi)	F_u (ksi)
1	29000	50	65

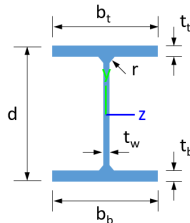
Section Dimensions



ID	Name	d (in)	t_w (in)				
3	2in Pipe Sch 120	2.38	0.25				
6	4in Pipe Sch 120	4.50	0.44				
9	8in Pipe Sch 40	8.63	0.32				



ID	Name	d (in)	b (in)	t_w (in)	t_b (in)	r (in)	
17	HSS5x3x1/4	5.00	3.00	0.23	0.23	0.23	



ID	Name	d (in)	t_w (in)	b_t (in)	b_b (in)	t_t (in)	t_b (in)	r (in)
20	W10x12	9.87	0.19	3.96	3.96	0.21	0.21	0.30

Section Properties

ID	Name	A (in ²)	J (in ⁴)	I_{yp} (in ⁴)	I_{zp} (in ⁴)	I_w (in ⁶)	S_{yp} (in ³)	S_{zp} (in ³)
3	2in Pipe Sch 120	1.67	1.91	0.96	0.96	0.00	1.13	1.13
6	4in Pipe Sch 120	5.58	23.29	11.64	11.64	0.00	7.24	7.24
9	8in Pipe Sch 40	8.40	144.98	72.49	72.49	0.00	22.21	22.21

11	159.30	34.37	46.90	6.46	56.26	44.91
12	251.01	248.88	27.16	27.16	75.30	75.30
13	159.30	116.35	31.48	6.46	56.26	44.91
14	159.30	116.35	31.17	6.46	56.26	44.91
15	159.30	34.37	46.90	6.46	56.26	44.91
16	159.30	34.37	46.90	6.46	56.26	44.91

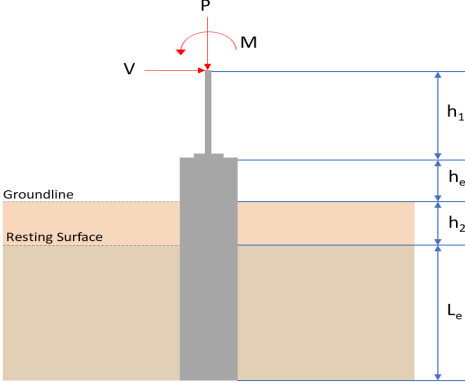
Design Ratio

Member ID	P	M _z	M _y	V _y	V _z	(P,M _z ,M _y)	Worst LC	KL/r	δ	Status
1	0.053	0.462	0.000	0.044	0.000	0.464	#32	0.298	Not Required	Pass
2	0.005	0.452	0.188	0.101	0.033	0.596	#21	0.036	Not Required	Pass
3	0.011	0.644	0.055	0.064	0.001	0.704	#21	0.046	Not Required	Pass
4	0.011	0.632	0.224	0.063	0.047	0.776	#21	0.082	Not Required	Pass
5	0.011	0.399	0.231	0.064	0.060	0.462	#21	0.076	Not Required	Pass
6	0.011	0.644	0.055	0.064	0.001	0.704	#21	0.046	Not Required	Pass
7	0.011	0.399	0.231	0.064	0.060	0.462	#21	0.076	Not Required	Pass
8	0.000	0.096	0.333	0.034	0.020	0.429	#21	Not Required	Not Required	Pass
9	0.026	0.052	0.052	0.001	0.000	0.116	#21	0.206	Not Required	Pass
10	0.011	0.632	0.224	0.063	0.047	0.776	#21	0.082	Not Required	Pass
11	0.000	0.097	0.333	0.034	0.020	0.430	#21	Not Required	Not Required	Pass
12	0.005	0.452	0.188	0.101	0.033	0.596	#21	0.036	Not Required	Pass
13	0.011	0.288	0.624	0.046	0.028	0.894	#21	0.204	Not Required	Pass
14	0.012	0.289	0.624	0.046	0.028	0.892	#21	0.204	Not Required	Pass
15	0.000	0.097	0.333	0.034	0.020	0.430	#21	Not Required	Not Required	Pass
16	0.000	0.096	0.333	0.034	0.020	0.429	#21	Not Required	Not Required	Pass

Definitions

Φ _t	Safety factor for tensile
Φ _c	Safety factor for compression
Φ _b	Safety factor for flexure
Φ _v	Safety factor for shear
E	Modulus of elasticity
F _y	Specified minimum yield stress
F _u	Specified minimum tensile strength
A	Cross-sectional area
J	Torsional constant
I _{yp}	Moment of inertia about the Y axes
I _{zp}	Moment of inertia about the Z axes
I _w	Warping constant
S _{yp}	Plastic section modulus about the Y axis
S _{zp}	Plastic section modulus about the Z axis
KL	Effective length
C _b	Buckling modification factor (from all load combinations)
L _b	Length between braced points
LST	Limited slenderness for tension
LSC	Limited slenderness for compression
LD	Limited deflection
P _n	Nominal axial strength (tension/compression)
M _n	Nominal flexural strength (about Z/Y axis)
V _n	Nominal shear strength (along Z/Y axis)
P	Design ratio in case of axial force
M _z	Design ratio in case of bending about Z axis
M _y	Design ratio in case of bending about Y axis
V _y	Design ratio in case of shear along Y axis
V _z	Design ratio in case of shear along Z axis
(P,M _z ,M _y)	Design ratio in case of axial force and bending action
KL/r	Design ratio in case of section slenderness
δ	Design ratio in case of member deflection
OK	Capacity is provided
NG	Capacity is not provided

Capacity is not provided

REFERENCES	CALCULATIONS	RESULTS																										
	<p>SkyCiv Foundation Design Pile Foundation</p> <p>Design Information : Design code : IBC 2021 (International Building Code) Unit System : Imperial</p>																											
	<p>Pile Input</p>  <p>Geometry Pile shape: round $D = 36$ in - Pile diameter $L = 8$ ft - Total pile length $h_1 = 0$ ft - Lateral load height from the top of the pile, $h_2 = 0$ ft - Depth to resisting surface $h_e = 0$ ft - Length of pile above the ground</p> <p>Tabulation of Soil Parameters</p> <table border="1" data-bbox="416 1079 1193 1171"> <thead> <tr> <th>Layer</th> <th>Label</th> <th>Allowable Bearing Pressure (q_a) (psf)</th> <th>Allowable Lateral Pressure (R) (psf/ft)</th> </tr> </thead> <tbody> <tr> <td>1</td> <td>Sand, silty sand, clayey sand, silty gravel & clayey gravel</td> <td>2000.000</td> <td>150.000</td> </tr> </tbody> </table> <p>Tabulation of Loads</p> <table border="1" data-bbox="676 1265 935 1435"> <thead> <tr> <th>Load Component</th> <th>ASD</th> <th>LRFD</th> </tr> </thead> <tbody> <tr> <td>P (kip)</td> <td>9.649</td> <td>15.427</td> </tr> <tr> <td>V_x (kip)</td> <td>-2.982</td> <td>-4.970</td> </tr> <tr> <td>V_z (kip)</td> <td>0.000</td> <td>0.000</td> </tr> <tr> <td>M_x (kipft)</td> <td>0.000</td> <td>0.000</td> </tr> <tr> <td>M_z (kipft)</td> <td>22.933</td> <td>38.500</td> </tr> </tbody> </table> <p>Material Properties $f'_{ck} = 3$ ksi - Concrete strength,</p>	Layer	Label	Allowable Bearing Pressure (q_a) (psf)	Allowable Lateral Pressure (R) (psf/ft)	1	Sand, silty sand, clayey sand, silty gravel & clayey gravel	2000.000	150.000	Load Component	ASD	LRFD	P (kip)	9.649	15.427	V_x (kip)	-2.982	-4.970	V_z (kip)	0.000	0.000	M_x (kipft)	0.000	0.000	M_z (kipft)	22.933	38.500	
Layer	Label	Allowable Bearing Pressure (q_a) (psf)	Allowable Lateral Pressure (R) (psf/ft)																									
1	Sand, silty sand, clayey sand, silty gravel & clayey gravel	2000.000	150.000																									
Load Component	ASD	LRFD																										
P (kip)	9.649	15.427																										
V_x (kip)	-2.982	-4.970																										
V_z (kip)	0.000	0.000																										
M_x (kipft)	0.000	0.000																										
M_z (kipft)	22.933	38.500																										
	<p>Required depth to resist lateral loads (ASD) H - Point of application of the lateral load</p> $H = h_1 + h_2 + h_e$ $H = (0 \text{ ft}) + (0 \text{ ft}) + (0 \text{ ft})$ $H = 0 \text{ ft}$ <p>Considering x-direction: H_o - Lateral force per length of pile,</p> $H_o = \frac{V_x}{D}$ $H_o = \frac{(-2.982 \text{ kip})}{(36 \text{ in})}$ $H_o = -0.994 \text{ kip/ft}$ <p>M_o - Moment per length of pile,</p> $M_o = \frac{M_z + (V_x H)}{D}$																											

	$M_o = \frac{(22.933 \text{ kipft}) + ((-2.982 \text{ kip}) \times (0 \text{ ft}))}{(36 \text{ in})}$ $M_o = 7.6443 \text{ kipft/ft}$ <p>Required depth of embedment in earth:</p> $L_x^3 - \left(14.14 \times \frac{H_o \times L_x}{R}\right) - \left(18.85 \times \frac{M_o}{R}\right) = 0$ <p>Solving the cubic equation: $L_{e,x} = 6.8388 \text{ ft}$ - Required depth in x-direction,</p> <p>Considering z-direction: $L_{e,z} = 0 \text{ ft}$ - Required depth in z-direction,</p> <p>Minimum embedded depth required: $L_{e,req}$ - Depth of pile required,</p> $L_{e,req} = \text{MAX}[L_{e,x}, L_{e,z}]$ $L_{e,req} = \text{MAX}[(6.8388 \text{ ft}), (0 \text{ ft})]$ $L_{e,req} = 6.839 \text{ ft}$ <p>L_e - Actual embedded length of pile,</p> $L_e = L - h_c - h_2$ $L_e = (8 \text{ ft}) - (0 \text{ ft}) - (0 \text{ ft})$ $L_e = 8 \text{ ft}$ <p>Ratio - Embedded depth</p> $\text{Ratio} = \frac{L_{e,req}}{L_e}$ $\text{Ratio} = \frac{(6.839 \text{ ft})}{(8 \text{ ft})}$ $\text{Ratio} = 0.85488$	<p>Status: PASS Ratio: 0.850</p>
	<p>End-bearing Capacity (ASD)</p> <p>A - Pile cross-section area</p> $A = \pi \left(\frac{D}{2}\right)^2$ $A = \pi \times \left(\frac{(36 \text{ in})}{2}\right)^2$ $A = 7.0686 \text{ ft}^2$ <p>q - End-bearing pressure</p> $q = \frac{P_c}{A}$ $q = \frac{(9.649 \text{ kip})}{(7.0686 \text{ ft}^2)}$ $q = 1.3651 \text{ kip/ft}^2$ <p>Check bearing capacity ratio:</p> <p>Ratio - Capacity</p> $\text{Ratio} = \frac{q}{q_a}$ $\text{Ratio} = \frac{(1.3651 \text{ kip/ft}^2)}{(2000 \text{ psf})}$ $\text{Ratio} = 0.68253$	<p>Status: PASS Ratio: 0.680</p>
<p>Czerniak</p>	<p>Lateral Soil Pressure (ASD):</p> <p>L/D - Length to least lateral dimension ratio,</p> $L/D = \frac{L}{D}$ $L/D = \frac{(8 \text{ ft})}{(36 \text{ in})}$	

$$L/D = 2.6667$$

Since $L/D \leq 10$,

Pile is short.

Considering x-direction:

$H_o = -0.994$ kip/ft - Lateral force per length of pile,

$M_o = 7.6443$ kipft/ft - Overturning moment per length of pile,

a - Distance from resting surface to pivot point,

$$a = \frac{(4 M_o L_e) + (3 H_o L_e^2)}{(6 M_o) + (4 H_o L_e)}$$

$$a = \frac{(4 \times (7.6443 \text{ kipft/ft}) \times (8 \text{ ft})) + (3 \times (-0.994 \text{ kip/ft}) \times (8 \text{ ft})^2)}{(6 \times (7.6443 \text{ kipft/ft})) + (4 \times (-0.994 \text{ kip/ft}) \times (8 \text{ ft}))}$$

$$a = 5.6063 \text{ ft}$$

p - Earth pressure against the pile at distance $a/2$ from resting surface,

$$p = \frac{1.178 [(4 M_o) + (3 H_o L_e)]^2}{L_e^2 [(3 M_o) + (2 H_o L_e)]}$$

$$p = \frac{1.178 \times [(4 \times (7.6443 \text{ kipft/ft})) + (3 \times (-0.994 \text{ kip/ft}) \times (8 \text{ ft}))]^2}{(8 \text{ ft})^2 \times [(3 \times (7.6443 \text{ kipft/ft})) + (2 \times (-0.994 \text{ kip/ft}) \times (8 \text{ ft}))]}$$

$$p = 0.1183 \text{ kip/ft}^2$$

s - Earth pressure against the pile at distance L_e ,

$$s = \frac{9.425 [(2 M_o) + (H_o L_e)]}{L_e^2}$$

$$s = \frac{9.425 \times [(2 \times (7.6443 \text{ kipft/ft})) + ((-0.994 \text{ kip/ft}) \times (8 \text{ ft}))]}{(8 \text{ ft})^2}$$

$$s = 1.0804 \text{ kip/ft}^2$$

Check lateral soil pressure capacity:

p_a - Allowable lateral soil pressure at depth $a/2$,

$$p_a = R \frac{a}{2}$$

$$p_a = (150 \text{ psf/ft}) \times \frac{(5.6063 \text{ ft})}{2}$$

$$p_a = 0.42048 \text{ kip/ft}^2$$

Ratio - Lateral soil capacity

$$\text{Ratio} = \frac{p}{p_a}$$

$$\text{Ratio} = \frac{(0.1183 \text{ kip/ft}^2)}{(0.42048 \text{ kip/ft}^2)}$$

$$\text{Ratio} = 0.28135$$

p_s - Allowable lateral soil pressure at depth L_e ,

$$p_s = R L_e$$

$$p_s = (150 \text{ psf/ft}) \times (8 \text{ ft})$$

$$p_s = 1.2 \text{ kip/ft}^2$$

Ratio - Lateral soil capacity

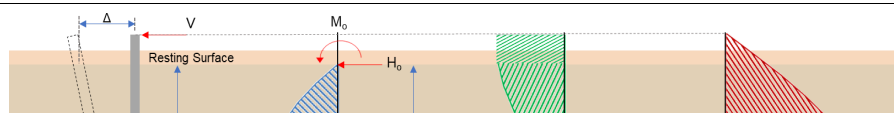
$$\text{Ratio} = \frac{s}{p_s}$$

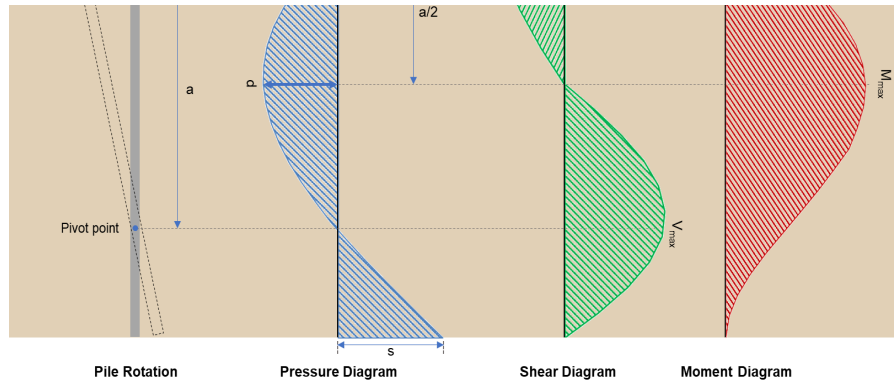
$$\text{Ratio} = \frac{(1.0804 \text{ kip/ft}^2)}{(1.2 \text{ kip/ft}^2)}$$

$$\text{Ratio} = 0.90037$$

Status: **PASS**
Ratio: **0.280**

Status: **PASS**
Ratio: **0.900**





Shear force and Bending moment (x-direction, LRFD)

H_o - Lateral force per length of pile,

$$H_o = \frac{V_x}{D}$$

$$H_o = \frac{(-4.97 \text{ kip})}{(36 \text{ in})}$$

$$H_o = -1.6567 \text{ kip/ft}$$

M_o - Moment per length of pile,

$$M_o = \frac{M_x + (V_x H)}{D}$$

$$M_o = \frac{(38.5 \text{ kipft}) + ((-4.97 \text{ kip}) \times (0 \text{ ft}))}{(36 \text{ in})}$$

$$M_o = 12.833 \text{ kipft/ft}$$

E - Distance from lateral load to resisting surface,

$$E = \frac{M_o}{H_o}$$

$$E = \frac{(12.833 \text{ kipft/ft})}{(-1.6567 \text{ kip/ft})}$$

$$E = 7.7465 \text{ ft}$$

a - Distance from resting surface to pivot point,

$$a = \frac{(4 M_o L_e) + (3 H_o L_e^2)}{(6 M_o) + (4 H_o L_e)}$$

$$a = \frac{(4 \times (12.833 \text{ kipft/ft}) \times (8 \text{ ft})) + (3 \times (-1.6567 \text{ kip/ft}) \times (8 \text{ ft})^2)}{(6 \times (12.833 \text{ kipft/ft})) + (4 \times (-1.6567 \text{ kip/ft}) \times (8 \text{ ft}))}$$

$$a = 5.6052 \text{ ft}$$

V_{max} - Max shear force located at depth a ,

$$V_{max} = (H_o D) \left[1 - \left[3 \left(\frac{4 E}{L_e} + 3 \right) \left(\frac{a}{L_e} \right)^2 \right] + \left[4 \left(\frac{3 E}{L_e} + 2 \right) \left(\frac{a}{L_e} \right)^3 \right] \right]$$

$$V_{max} = ((-1.6567 \text{ kip/ft}) \times (36 \text{ in})) \times \left[1 - \left[3 \times \left(\frac{4 \times (7.7465 \text{ ft})}{(8 \text{ ft})} + 3 \right) \times \left(\frac{(5.6052 \text{ ft})}{(8 \text{ ft})} \right)^2 \right] + \left[4 \times \left(\frac{3 \times (7.7465 \text{ ft})}{(8 \text{ ft})} + 2 \right) \times \left(\frac{(5.6052 \text{ ft})}{(8 \text{ ft})} \right)^3 \right] \right]$$

$$V_{max} = 11.799 \text{ kip}$$

M_{max} - Max bending moment located at depth $a/2$,

$$M_{max} = (H_o D L_e) \left[\left(\frac{E}{L_e} + \frac{a}{2 L_e} \right) - \left[\left(\frac{4 E}{L_e} + 3 \right) \left(\frac{a}{2 L_e} \right)^3 \right] + \left[\left(\frac{3 E}{L_e} + 2 \right) \left(\frac{a}{2 L_e} \right)^4 \right] \right]$$

$$M_{max} = ((-1.6567 \text{ kip/ft}) \times (36 \text{ in}) \times (8 \text{ ft})) \times \left[\left(\frac{(7.7465 \text{ ft})}{(8 \text{ ft})} + \frac{(5.6052 \text{ ft})}{2 \times (8 \text{ ft})} \right) - \left[\left(\frac{4 \times (7.7465 \text{ ft})}{(8 \text{ ft})} + 3 \right) \times \left(\frac{(5.6052 \text{ ft})}{2 \times (8 \text{ ft})} \right)^3 \right] + \left[\left(\frac{3 \times (7.7465 \text{ ft})}{(8 \text{ ft})} + 2 \right) \times \left(\frac{(5.6052 \text{ ft})}{2 \times (8 \text{ ft})} \right)^4 \right] \right]$$

$$M_{max} = 43.617 \text{ kipft}$$

Minimum Reinforcement Check (LRFD)

Parameters:

$f'_{ck} = 3 \text{ ksi}$ - Concrete strength,
 $f_{yk} = 60 \text{ ksi}$ - Longitudinal reinforcement strength,
 $\phi = 0.65$ - Reduction factor for axial strength,
 $\alpha = 0.85$ - Alpha factor for axial strength,
 $A_g = 1017.9 \text{ in}^2$ - Gross area of concrete,

Table 22.4.2.1

Longitudinal reinforcement:

Required reinforcement due to axial load, $A_{st,required}$

22.4.2.2, 10.6.1.1

$A_{st,required}$

$$A_{st,required} = \text{Min} \left[\frac{\frac{P}{\phi \alpha} - (0.85 f'_{ck} A_g)}{f_{yk} - (0.85 f'_{ck})}, (0.08 A_g) \right]$$

$$A_{st,required} = \text{Min} \left[\frac{\frac{(15.427 \text{ kip})}{(0.65) \times (0.85)} - (0.85 \times (3 \text{ ksi}) \times (1017.9 \text{ in}^2))}{(60 \text{ ksi}) - (0.85 \times (3 \text{ ksi}))}, (0.08 \times (1017.9 \text{ in}^2)) \right]$$

$$A_{st,required} = -44.694 \text{ in}^2$$

A_{min} - Governing minimum reinforcement area,

$$A_{min} = \text{Max} [A_{st,required}, (0.0018 A_g)]$$

$$A_{min} = \text{Max} [(-44.694 \text{ in}^2), (0.0018 \times (1017.9 \text{ in}^2))]$$

$$A_{min} = 1.8322 \text{ in}^2$$

n_{rebar} - Required number of reinforcement,

$$n_{rebar} = \frac{A_{min}}{A_{rebar}}$$

$$n_{rebar} = \frac{(1.8322 \text{ in}^2)}{(0.3068 \text{ in}^2)}$$

$$n_{rebar} = 6$$

A_{st} - Actual total reinforcement area,

$$A_{st} = n_{rebar} \frac{\pi d_{bar}^2}{4}$$

$$A_{st} = (6) \times \frac{\pi \times (0.625 \text{ in})^2}{4}$$

$$A_{st} = 1.8408 \text{ in}^2$$

Ratio - Capacity

$$\text{Ratio} = \frac{A_{min}}{A_{st}}$$

$$\text{Ratio} = \frac{(1.8322 \text{ in}^2)}{(1.8408 \text{ in}^2)}$$

$$\text{Ratio} = 0.99533$$

25.2.3

s_{rebar} - Minimum spacing of reinforcement,

$$s_{rebar} = \text{Max} [1.5, (1.5 d_{bar})]$$

$$s_{rebar} = \text{Max} [1.5, (1.5 \times (0.625 \text{ in}))]$$

$$s_{rebar} = 1.5 \text{ in}$$

Ties:

25.7.2.2

Since longitudinal reinforcement is \leq No. 10Ø: Use #3(0.375 in)

25.7.2.1

s_{ties} - Maximum center-to-center spacing of ties,

$$s_{ties} = \text{Min} [(16 d_{bar}), (48 d_{ties}), D]$$

$$s_{ties} = \text{Min} [(16 \times (0.625 \text{ in})), (48 \times (0.375 \text{ in})), (36 \text{ in})]$$

$$s_{ties} = 10 \text{ in}$$

Summary:

Status: **PASS**
Ratio: **1.000**

Main reinforcement: **6 - #5 (0.625 in)**
Ties: **#3(0.375 in) - 10 in**

Axial Compression Strength (ACI 318-19, LRFD)

22.4.2.2

ϕP_N - Allowable axial compressive strength

$$\phi P_N = \phi \cdot 0.85 \left[(0.85 f'_{ck} [A_g - A_{st}]) + (f_{yk} A_{st}) \right]$$

$$\phi P_N = (0.65) \times 0.85 \times \left[(0.85 \times (3 \text{ ksi}) \times [(1017.9 \text{ in}^2) - (1.8408 \text{ in}^2)]) + ((60 \text{ ksi}) \times (1.8408 \text{ in}^2)) \right]$$

$$\phi P_N = 1492.5 \text{ kip}$$

Ratio - Capacity

$$\text{Ratio} = \frac{P}{\phi P_N}$$

$$\text{Ratio} = \frac{(15.427 \text{ kip})}{(1492.5 \text{ kip})}$$

$$\text{Ratio} = 0.010336$$

Status: **PASS**
Ratio: **0.010**

Shear Strength (ACI 318-19, LRFD)

Parameters:

22.5.2.2

$b_w = 36 \text{ in}$ - Effective width,
 d - Effective depth

$$d = 0.80 D$$

$$d = 0.80 \times (36 \text{ in})$$

$$d = 28.8 \text{ in}$$

22.5.5.1.3

λ_s - size effect modification factor

$$\lambda_s = \text{MIN} \left[\sqrt{\frac{2}{1 + \frac{d}{10}}}, 1 \right]$$

$$\lambda_s = \text{MIN} \left[\sqrt{\frac{2}{1 + \frac{(28.8 \text{ in})}{10}}}, 1 \right]$$

$$\lambda_s = 0.71796$$

The following variables were converted to be consistent with empirical formula $f'_{ck} = 3 \text{ ksi} \rightarrow 3000 \text{ psi}$.

22.5.5.1.1

$V_{c,max}$ - Max shear strength of concrete

$$V_{c,max} = 5 \lambda_s \sqrt{f'_{ck}} b_w d$$

$$V_{c,max} = 5 \times (0.71796) \times \sqrt{(3000 \text{ psi})} \times (36 \text{ in}) \times (28.8 \text{ in})$$

$$V_{c,max} = 203.86 \text{ kip}$$

The following variables were converted to be consistent with empirical formula $f'_{ck} = 3 \text{ ksi} \rightarrow 3000 \text{ psi}$, $P = 15.427 \text{ kip} \rightarrow 15427 \text{ lbf}$.

22.5.5.1.1(a)

$V_{c,a}$ - Shear strength of concrete (a)

$$V_{c,a} = \left[2 \lambda_s \sqrt{f'_{ck}} + \frac{P}{6 A_g} \right] b_w d$$

$$V_{c,a} = \left[2 \times (0.71796) \times \sqrt{(3000 \text{ psi})} + \frac{(15427 \text{ lbf})}{6 \times (1017.9 \text{ in}^2)} \right] \times (36 \text{ in}) \times (28.8 \text{ in})$$

$$V_{c,a} = 84.162 \text{ kip}$$

The following variables were converted to be consistent with empirical formula $f'_{ck} = 3 \text{ ksi} \rightarrow 3000 \text{ psi}$.

22.5.5.1.2

$V_{c,b}$ - Shear strength of concrete (b)

$$V_{c,b} = \left[2 \lambda_s \sqrt{f'_{ck}} + (0.05 f'_{ck}) \right] b_w d$$

$$V_{c,b} = \left[2 \times (0.71796) \times \sqrt{(3000 \text{ psi})} + (0.05 \times (3000 \text{ psi})) \right] \times (36 \text{ in}) \times (28.8 \text{ in})$$

$$V_{c,b} = 237.06 \text{ kip}$$

V_c - Governing shear strength of concrete

$$V_c = \text{Min} [V_{c,max}, V_{c,a}, V_{c,b}]$$

$$V_c = \text{Min} [(203.86 \text{ kip}), (84.162 \text{ kip}), (237.06 \text{ kip})]$$

<p>22.5.1.2</p> <p>22.5.8.5.3</p> <p>22.5.1.1</p>	<p style="text-align: center;">$V_c = 84.162 \text{ kip}$</p> <p>The following variables were converted to be consistent with empirical formula $f'_{ck} = 3 \text{ ksi} \rightarrow 3000 \text{ psi}$.</p> <p>$V_{s,a}$ - Shear strength of steel (a)</p> $V_{s,a} = 8 \sqrt{f'_{ck}} b_w d$ $V_{s,a} = 8 \times \sqrt{(3000 \text{ psi})} \times (36 \text{ in}) \times (28.8 \text{ in})$ $V_{s,a} = 454.3 \text{ kip}$ <p>A_v - Ties rebar area,</p> $A_v = \frac{\pi d_{ties}^2}{4}$ $A_v = \frac{\pi \times (0.375 \text{ in})^2}{4}$ $A_v = 0.11045 \text{ in}^2$ <p>$V_{s,b}$ - Shear strength of steel (b)</p> $V_{s,b} = \frac{2 A_v f_{yw} d}{s_{ties}}$ $V_{s,b} = \frac{2 \times (0.11045 \text{ in}^2) \times (60 \text{ ksi}) \times (28.8 \text{ in})}{(10 \text{ in})}$ $V_{s,b} = 38.17 \text{ kip}$ <p>V_s - Governing shear strength of steel</p> $V_s = MIN[V_{s,a}, V_{s,b}]$ $V_s = MIN[(454.3 \text{ kip}), (38.17 \text{ kip})]$ $V_s = 38.17 \text{ kip}$ <p>ϕV_n - Allowable shear strength</p> $\phi V_n = \phi (V_c + V_s)$ $\phi V_n = (0.65) \times ((84.162 \text{ kip}) + (38.17 \text{ kip}))$ $\phi V_n = 79.516 \text{ kip}$ <p>Considering x-direction:</p> <p>$V_{max} = 11.799 \text{ kip}$ - Maximum shear force in the x-direction, <i>Ratio</i> - Capacity</p> $Ratio = \frac{V_{max}}{\phi V_n}$ $Ratio = \frac{(11.799 \text{ kip})}{(79.516 \text{ kip})}$ $Ratio = 0.14839$	<p>Status: PASS Ratio: 0.150</p>
<p>14.5.2.1b</p>	<p>Flexural Strength (ACI 318-19, LRFD)</p> <p>S_m - Section modulus</p> $S_m = \frac{\pi D^3}{32}$ $S_m = \frac{\pi \times (36 \text{ in})^3}{32}$ $S_m = 4580.4 \text{ in}^3$ <p>$\lambda = 1$ - Concrete modification factor (Normal concrete), Allowable flexural strength: M_n shall be the lesser of:</p> <p>$\phi M_{n,1}$</p> $\phi M_{n,1} = \phi \times 5 \times \lambda \times \sqrt{f'_c} \times S_m$ $\phi M_{n,1} = 0.65 \times 5 \times 1 \times \sqrt{(3 \text{ ksi})} \times 4580.442 \text{ in}^3$ $\phi M_{n,1} = 67.947 \text{ kipft}$ <p>$\phi M_{n,2}$</p>	

$$\phi M_{n,2} = \phi 0.85 f'_c S_m$$

$$\phi M_{n,2} = (0.65) \times 0.85 \times (3 \text{ ksi}) \times (4580.4 \text{ in}^3)$$

$$\phi M_{n,2} = 632.67 \text{ kipft}$$

Therefore,

ϕM_n - Allowable flexural strength,

$$\phi M_n = \text{MIN}[\phi M_{n,1}, \phi M_{n,2}]$$

$$\phi M_n = \text{MIN}[(67.947 \text{ kipft}), (632.67 \text{ kipft})]$$

$$\phi M_n = 67.947 \text{ kipft}$$

Considering x-direction:

$M_{max} = 43.617 \text{ kipft}$ - Maximum moment in the x-direction,

Ratio - Capacity

$$\text{Ratio} = \frac{M_{max}}{\phi M_n}$$

$$\text{Ratio} = \frac{(43.617 \text{ kipft})}{(67.947 \text{ kipft})}$$

$$\text{Ratio} = 0.64192$$

Status: **PASS**
Ratio: **0.640**