

Your Project Calculations



Project Name: Patrick#2-RevA

S3D Model Link:

https://platform.skyciv.com/structural?preload_name=Patrick#2-RevA&preload_path=Shared%20Enterprise%20Folder/MT_Solar_Projects/5_2023

Public Model Link:

https://platform.skyciv.com/structural-viewer?project_id=bv4PA7wDyV4GebRcfdOIVSzs7GtgvCusODxfH6n0p1bFB0NP7FiYSaEVwszbQRZ

Array Specification

Product:	Beam
Unique ID:	2P-15-8TOP-HD-45-L-5Hx5W-2L7G
Duty Classification:	HD
Module Width:	38.40 in
Module Length:	71.70in
Number of Rows:	5
Number of Columns:	5
Total Number of Modules:	25
Desired Tilt Angle:	45
Front Edge Clearance:	5
Total Array Height at Tilt:	16.39 ft
Total Frame Length:	30.00 ft
Frame Weight:	1641 lbs
Array Dimensions N/S:	16.21 ft
Array Dimensions E/W:	30.29 ft
Rail Length:	194.50 in
Rail Spacing:	2.99 ft
Rail Check:	Not Checked

Support Specifications

Pole Size:	8in Pipe Sch 40
Pole Length above Grade:	10.73 ft
Number of Poles:	2
Pole Spacing:	15 ft

Foundation Specifications

Foundation Type:	Square
Foundation Dimensions:	48 x 48 in
Foundation Depth (below grade):	Pile 1: 7.00 ft Pile 2: 7.00 ft
Foundation Volume:	8.296 y ³
Foundation Result:	PASSED
Mount Twist:	0.798734 kip

Site Info

Risk Category:	I
Exposure:	C
Soil Classification:	sand
Site Location:	2117 Southfork Rd, Cody, WY 82414, USA
Wind Speed:	101 mph
Snow Load:	36 psf
Design Uplift Pressure:	Multiple pressures
Design Downforce Pressure:	Multiple pressures
Design Snow Pressure:	0.009897 ksf



Design Disclaimer

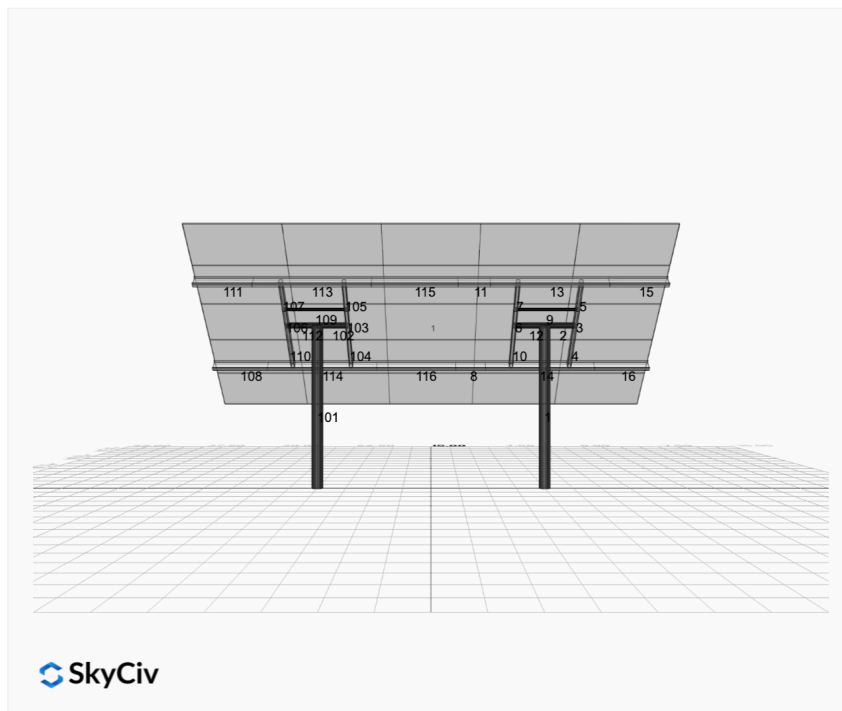
This software should be used for preliminary designs and should not be used as a final design unless reviewed, verified and designed by a qualified structural engineer.

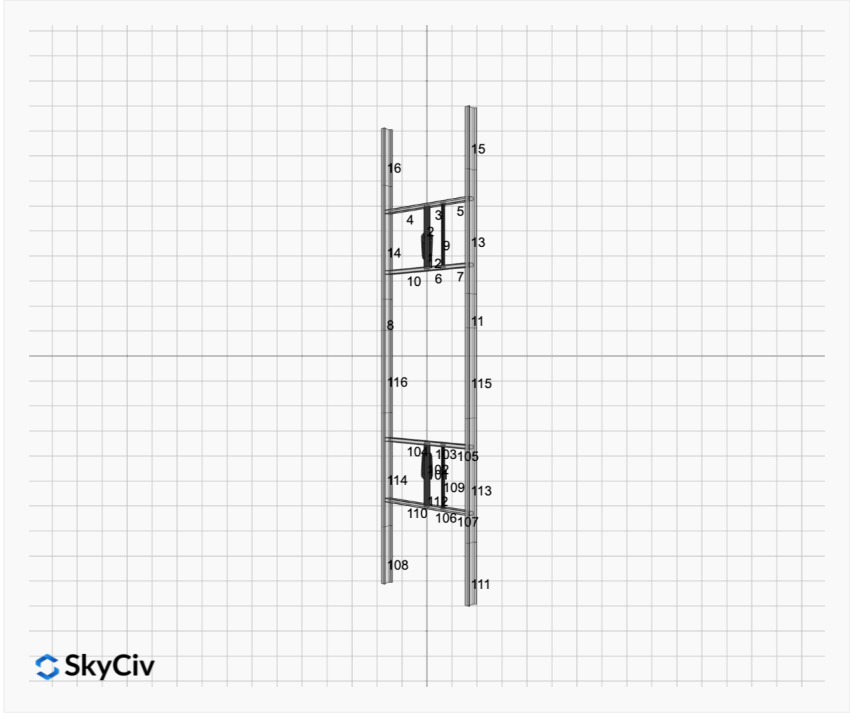
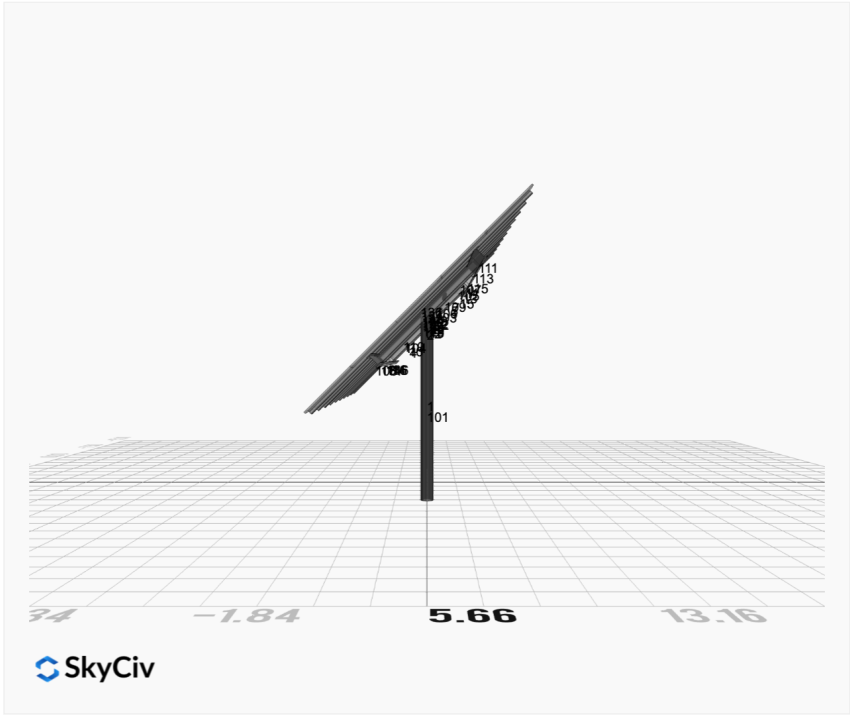
AutoDesigner Input

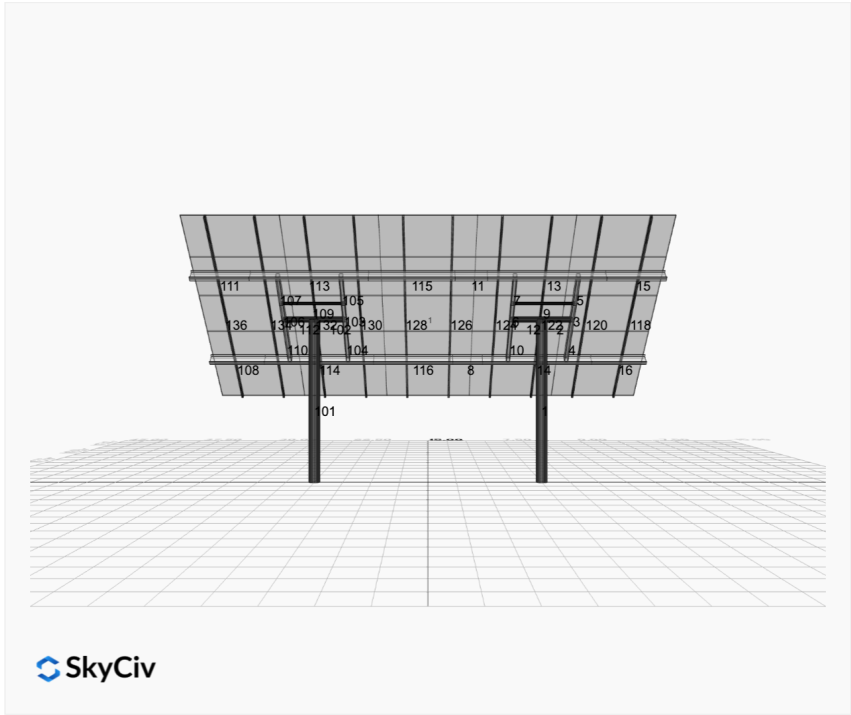
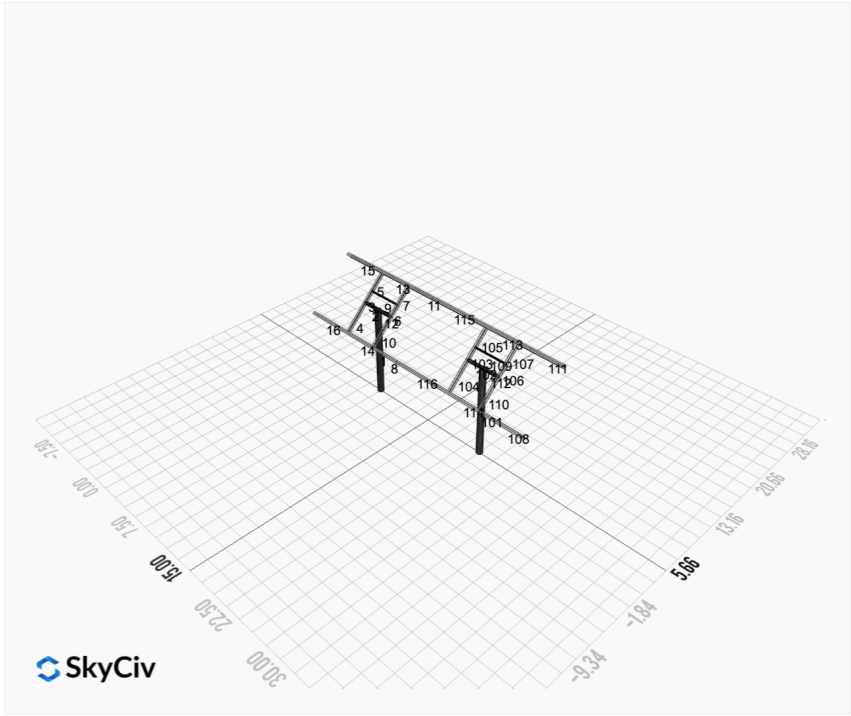
```
{
  "product_type": "Beam",
  "project_id": "Patrick#2-RevA",
  "site_address": "2117 Southfork Rd, Cody, WY 82414, USA",
  "module_width": 38.4,
  "module_length": 71.7,
  "number_rows": 5,
  "number_columns": 5,
  "pole_mount_section": "4_40",
  "core_pipe_width": 65,
  "core_pipe_section": "2_40",
  "adjuster_section": "2_40",
  "core_beam_height": 65,
  "core_beam_section": "HSS3x2x1/8",
  "main_pipe_section": "2_12GA",
  "pole_spacing": 15,
  "tilt_angle": 45,
  "ground_clearance": 5,
  "risk_category": "I",
  "exposure_category": "C",
  "frame_duty_override": "auto",
  "pole_override": "auto",
  "soil_type": "sand",
  "foundation_type": "Square",
  "foundation_size": 48,
  "check_rails": false,
  "wind_speed_override": 101,
  "snow_load_override": 36,
  "direct_snow_load": false
}
```

Design Notes:

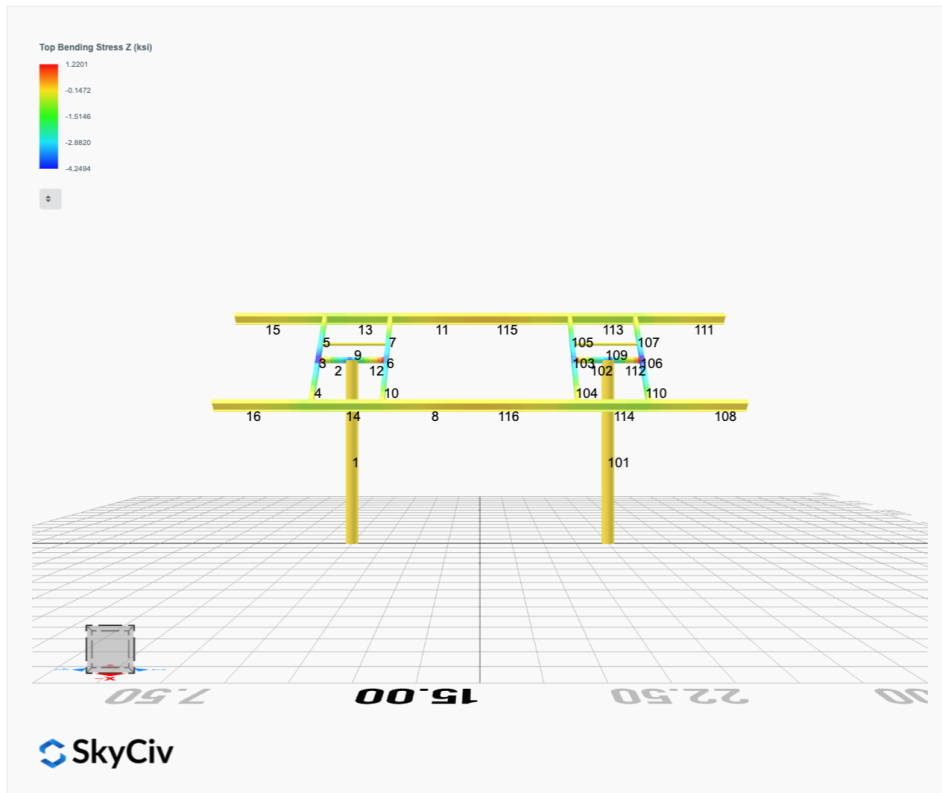
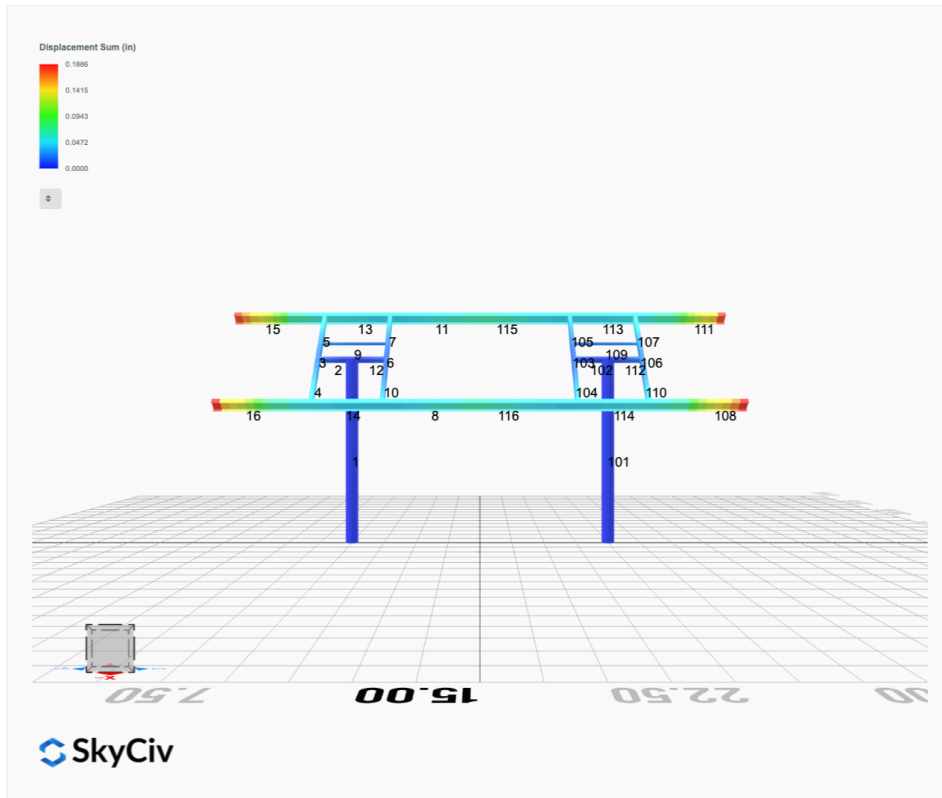
- AISC Deflection checks are set to L/1 due to structure design intent

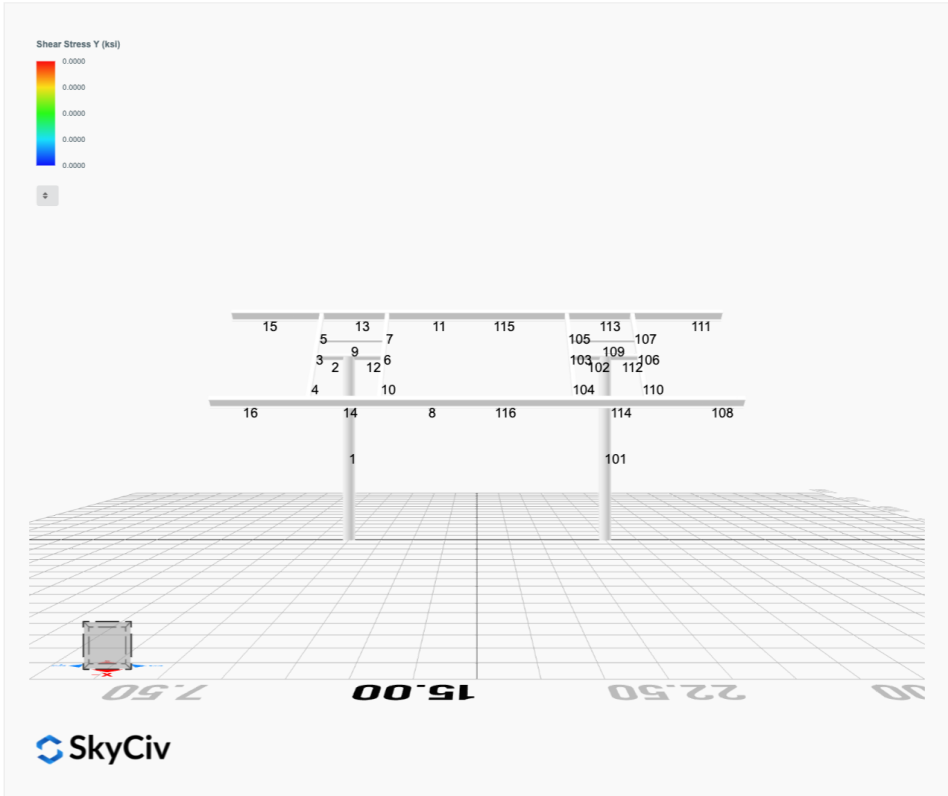
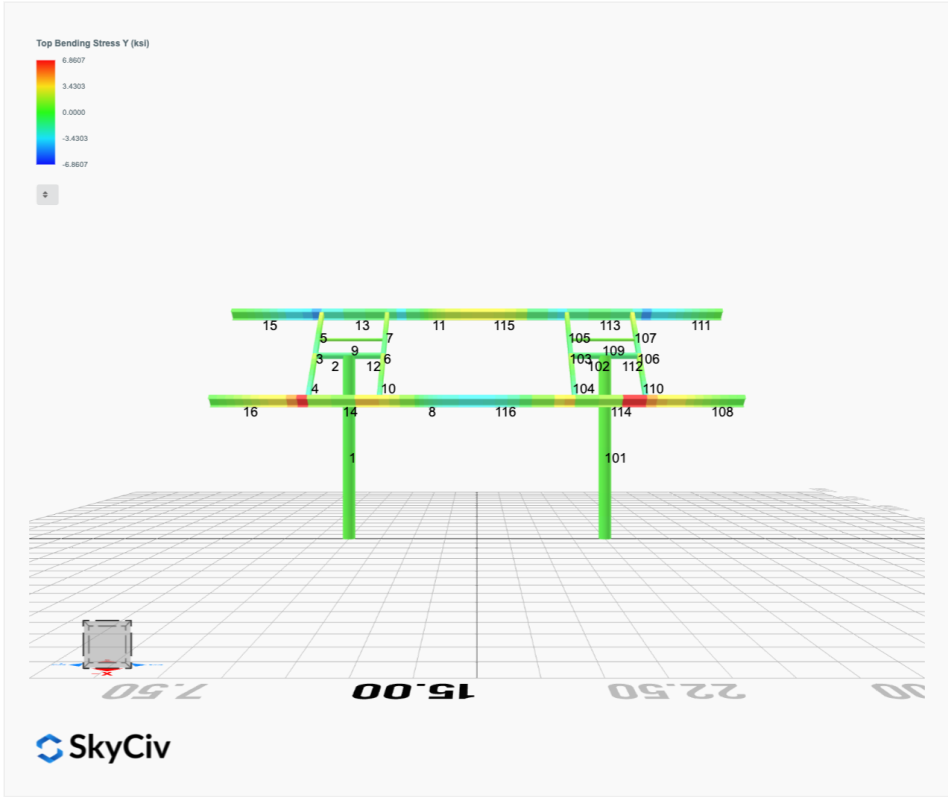


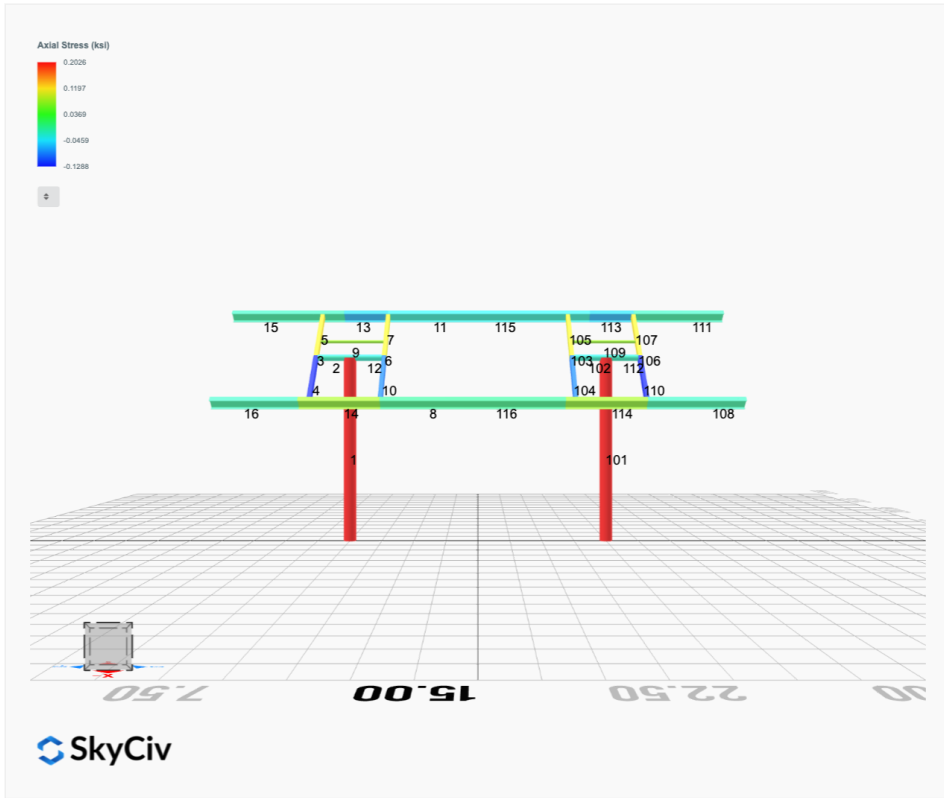




FEM Results (Envelope Worst Case for each member)







Reaction Forces for Foundation 1 (Node ID#1), (kip, kip-ft)

ASD Load Combination Results

Name	Fx	Fy	Fz	Mx	My	Mz
ULS: 1. D	0.0000	1.9526	-0.0270	-0.0820	0.0735	0.0220
ULS: 2. D + L	0.0000	1.9526	-0.0270	-0.0820	0.0735	0.0220
ULS: 3. D + (S or Lr or R)	0.0000	3.6540	-0.0588	-0.1785	0.1599	0.0258
ULS: 3. D + (S or Lr or R)	0.0000	1.9526	-0.0270	-0.0820	0.0735	0.0220
ULS: 4. D + 0.75L + 0.75(S or Lr or R)	0.0000	3.2286	-0.0508	-0.1544	0.1383	0.0248
ULS: 4. D + 0.75L + 0.75(S or Lr or R)	0.0000	1.9526	-0.0270	-0.0820	0.0735	0.0220
ULS: 5b. D + 0.7E	0.0000	1.9526	-0.0270	-0.0820	0.0735	0.0220
ULS: 6b. D + 0.75L + 0.75(0.7)E + 0.75S	0.0000	3.2286	-0.0508	-0.1544	0.1383	0.0248
ULS: 8. 0.6D + 0.7E	0.0000	1.1716	-0.0162	-0.0492	0.0441	0.0132
ULS: 5a. D + 0.6W_Wind downforce Case A only	-3.1714	5.1240	-0.1285	-0.3809	0.4743	35.6303
ULS: 5a. D + 0.6W_Wind downforce Case B only	-3.1714	5.1240	-0.1285	-0.3809	0.4743	35.6303
ULS: 5a. D + 0.6W_Wind uplift Case A only	2.2942	-0.3416	0.0463	0.1332	-0.2163	-23.6465
ULS: 5a. D + 0.6W_Wind uplift Case B only	2.0243	-0.0717	0.0381	0.1092	-0.1839	-27.1595
ULS: 6a. D + 0.75L + 0.75(0.6)W + 0.75(S or Lr or R)_Wind downforce Case A only	-2.3786	5.6072	-0.1270	-0.3786	0.4389	26.7311
ULS: 6a. D + 0.75L + 0.75(0.6)W + 0.75(S or Lr or R)_Wind downforce Case B only	-2.3786	5.6072	-0.1270	-0.3786	0.4389	26.7311
ULS: 6a. D + 0.75L + 0.75(0.6)W + 0.75(S or Lr or R)_Wind uplift Case A only	1.7207	1.5080	0.0041	0.0070	-0.0790	-17.7265
ULS: 6a. D + 0.75L + 0.75(0.6)W + 0.75(S or Lr or R)_Wind uplift Case B only	1.5182	1.7104	-0.0020	-0.0110	-0.0547	-20.3613
ULS: 6a. D + 0.75L + 0.75(0.6)W + 0.75(S or Lr or R)_Wind downforce Case A only	-2.3786	4.3312	-0.1031	-0.3062	0.3741	26.7282
ULS: 6a. D + 0.75L + 0.75(0.6)W + 0.75(S or Lr or R)_Wind downforce Case B only	-2.3786	4.3312	-0.1031	-0.3062	0.3741	26.7282
ULS: 6a. D + 0.75L + 0.75(0.6)W + 0.75(S or Lr or R)_Wind uplift Case A only	1.7207	0.2319	0.0280	0.0794	-0.1438	-17.7293
ULS: 6a. D + 0.75L + 0.75(0.6)W + 0.75(S or Lr or R)_Wind uplift Case B only	1.5182	0.4344	0.0218	0.0614	-0.1196	-20.3641
ULS: 7. 0.6D + 0.6W_Wind downforce Case A only	-3.1714	4.3430	-0.1178	-0.3481	0.4449	35.6215
ULS: 7. 0.6D + 0.6W_Wind downforce Case B only	-3.1714	4.3430	-0.1178	-0.3481	0.4449	35.6215
ULS: 7. 0.6D + 0.6W_Wind uplift Case A only	2.2942	-1.1227	0.0571	0.1660	-0.2457	-23.6553
ULS: 7. 0.6D + 0.6W_Wind uplift Case B only	2.0243	-0.8528	0.0489	0.1420	-0.2133	-27.1683

Worst Case Reactions LRFD

These calculations are taken directly from the FEA via SkyCiv and are used in the Concrete Checks of the Foundation Module.
Note: Worst case values are assumed as downforce wind load cases.

Result	Value (kip, kip-ft)
Axial	8.4795
Shear X	-5.2857
Shear Z	-0.2176
Moment X	-0.6455
Moment Y (Twist)	0.7985
Moment Z	59.9403

Worst Case Reactions ASD

These results are taken from the worst case values in the above table and are used in the Soil Checks in the Foundation Module.
Note: Worst case values are assumed as downforce wind load cases.

Result	Value (kip, kip-ft)
Axial	5.6072
Shear X	-3.1714
Shear Z	-0.1285
Moment X	-0.3809
Moment Y (Twist)	0.4743
Moment Z	35.6303

Reaction Forces for Foundation 2 (Node ID#101), (kip, kip-ft)

ASD Load Combination Results

Name	Fx	Fy	Fz	Mx	My	Mz
ULS: 1. D	-0.0000	1.9526	0.0270	0.0820	-0.0735	0.0220
ULS: 2. D + L	-0.0000	1.9526	0.0270	0.0820	-0.0735	0.0220
ULS: 3. D + (S or Lr or R)	-0.0000	3.6540	0.0588	0.1785	-0.1599	0.0258
ULS: 3. D + (S or Lr or R)	-0.0000	1.9526	0.0270	0.0820	-0.0735	0.0220
ULS: 4. D + 0.75L + 0.75(S or Lr or R)	-0.0000	3.2286	0.0508	0.1544	-0.1383	0.0248
ULS: 4. D + 0.75L + 0.75(S or Lr or R)	-0.0000	1.9526	0.0270	0.0820	-0.0735	0.0220
ULS: 5b. D + 0.7E	-0.0000	1.9526	0.0270	0.0820	-0.0735	0.0220

Name	Fx	Fy	Fz	Mx	My	Mz
ULS: 6b. D + 0.75L + 0.75(0.7)E + 0.75S	-0.0000	3.2286	0.0508	0.1544	-0.1383	0.0248
ULS: 8. 0.6D + 0.7E	-0.0000	1.1716	0.0162	0.0492	-0.0441	0.0132
ULS: 5a. D + 0.6W_Wind downforce Case A only	-3.1714	5.1240	0.1285	0.3809	-0.4743	35.6303
ULS: 5a. D + 0.6W_Wind downforce Case B only	-3.1714	5.1240	0.1285	0.3809	-0.4743	35.6303
ULS: 5a. D + 0.6W_Wind uplift Case A only	2.2942	-0.3416	-0.0463	-0.1332	0.2163	-23.6465
ULS: 5a. D + 0.6W_Wind uplift Case B only	2.0243	-0.0717	-0.0381	-0.1092	0.1839	-27.1595
ULS: 6a. D + 0.75L + 0.75(0.6)W + 0.75(S or Lr or R)_Wind downforce Case A only	-2.3786	5.6072	0.1270	0.3786	-0.4389	26.7311
ULS: 6a. D + 0.75L + 0.75(0.6)W + 0.75(S or Lr or R)_Wind downforce Case B only	-2.3786	5.6072	0.1270	0.3786	-0.4389	26.7311
ULS: 6a. D + 0.75L + 0.75(0.6)W + 0.75(S or Lr or R)_Wind uplift Case A only	1.7207	1.5080	-0.0041	-0.0070	0.0790	-17.7265
ULS: 6a. D + 0.75L + 0.75(0.6)W + 0.75(S or Lr or R)_Wind uplift Case B only	1.5182	1.7104	0.0020	0.0110	0.0547	-20.3613
ULS: 6a. D + 0.75L + 0.75(0.6)W + 0.75(S or Lr or R)_Wind downforce Case A only	-2.3786	4.3312	0.1031	0.3062	-0.3741	26.7283
ULS: 6a. D + 0.75L + 0.75(0.6)W + 0.75(S or Lr or R)_Wind downforce Case B only	-2.3786	4.3312	0.1031	0.3062	-0.3741	26.7283
ULS: 6a. D + 0.75L + 0.75(0.6)W + 0.75(S or Lr or R)_Wind uplift Case A only	1.7207	0.2319	-0.0280	-0.0794	0.1439	-17.7293
ULS: 6a. D + 0.75L + 0.75(0.6)W + 0.75(S or Lr or R)_Wind uplift Case B only	1.5182	0.4344	-0.0218	-0.0614	0.1196	-20.3641
ULS: 7. 0.6D + 0.6W_Wind downforce Case A only	-3.1714	4.3430	0.1178	0.3481	-0.4449	35.6215
ULS: 7. 0.6D + 0.6W_Wind downforce Case B only	-3.1714	4.3430	0.1178	0.3481	-0.4449	35.6215
ULS: 7. 0.6D + 0.6W_Wind uplift Case A only	2.2942	-1.1227	-0.0571	-0.1660	0.2457	-23.6553
ULS: 7. 0.6D + 0.6W_Wind uplift Case B only	2.0243	-0.8528	-0.0489	-0.1420	0.2133	-27.1683

Worst Case Reactions LRFD

These calculations are taken directly from the FEA via SkyCiv and are used in the Concrete Checks of the Foundation Module.
 Note: Worst case values are assumed as downforce wind load cases.

Result	Value (kip, kip-ft)
Axial	8.4795
Shear X	-5.2857
Shear Z	0.2176
Moment X	0.6455
Moment Y (Twist)	0.7987
Moment Z	59.9412

Worst Case Reactions ASD

These results are taken from the worst case values in the above table and are used in the Soil Checks in the Foundation Module.
 Note: Worst case values are assumed as downforce wind load cases.

Result	Value (kip, kip-ft)
Axial	5.6072
Shear X	-3.1714
Shear Z	0.1285
Moment X	0.3809
Moment Y (Twist)	0.4743
Moment Z	35.6303

Project Details

Design Code: AISC 360-16 LRFD
 Provision: LRFD
 Country: United States

User Name: sales@mtsolar.us
 Project Name: Patrick#2-RevA
 Unit System: imperial



Design Input Information

Design Factors			
Φ_t	Φ_c	Φ_b	Φ_v
0.9	0.9	0.9	0.9

Design Materials			
ID	E (ksi)	F _y (ksi)	F _u (ksi)
1	29000	50	65

Section Dimensions

ID	Name	d (in)	t _w (in)				
2	2in Pipe Sch 80	2.38	0.22				
5	4in Pipe Sch 80	4.50	0.34				
9	8in Pipe Sch 40	8.63	0.32				

ID	Name	d (in)	b (in)	t _w (in)	t _b (in)	r (in)	
16	HSS5x3x3/16	5.00	3.00	0.17	0.17	0.17	

ID	Name	d (in)	t _w (in)	b _t (in)	b _b (in)	t _t (in)	t _b (in)	r (in)
19	W8x10	7.89	0.17	3.94	3.94	0.20	0.20	0.30

Section Properties								
ID	Name	A (in ²)	J (in ⁴)	I _{yp} (in ⁴)	I _{zp} (in ⁴)	I _w (in ⁶)	S _{yp} (in ³)	S _{zp} (in ³)
2	2in Pipe Sch 80	1.48	1.74	0.87	0.87	0.00	1.02	1.02
5	4in Pipe Sch 80	4.41	19.22	9.61	9.61	0.00	5.85	5.85

115	133.20	109.71	32.87	6.12	40.24	43.62
116	133.20	109.71	31.46	6.12	40.24	43.62

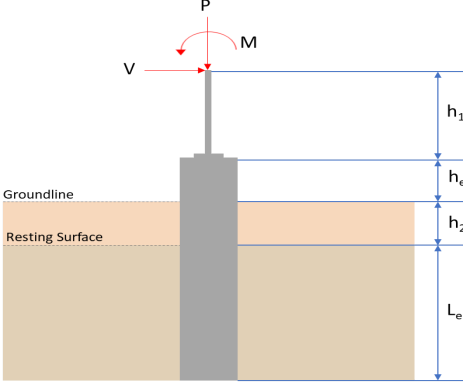
Design Ratio

Member ID	P	M _z	M _y	V _y	V _z	(P,M _z ,M _y)	Worst LC	KL/r	δ	Status
1	0.042	0.720	0.020	0.047	0.002	0.748	#13	0.460	Not Required	Pass
2	0.001	0.348	0.250	0.074	0.047	0.599	#13	0.053	Not Required	Pass
3	0.008	0.626	0.061	0.063	0.015	0.668	#13	0.045	Not Required	Pass
4	0.008	0.566	0.101	0.057	0.022	0.593	#13	0.080	Not Required	Pass
5	0.008	0.388	0.103	0.062	0.025	0.402	#13	0.074	Not Required	Pass
6	0.007	0.549	0.043	0.054	0.009	0.573	#13	0.045	Not Required	Pass
7	0.007	0.341	0.071	0.055	0.018	0.350	#13	0.074	Not Required	Pass
8	0.001	0.038	0.071	0.027	0.009	0.080	#21	0.095	Not Required	Pass
9	0.004	0.051	0.057	0.002	0.001	0.109	#13	0.204	Not Required	Pass
10	0.006	0.492	0.079	0.049	0.019	0.544	#13	0.080	Not Required	Pass
11	0.001	0.041	0.071	0.030	0.009	0.082	#21	0.063	Not Required	Pass
12	0.001	0.272	0.214	0.063	0.042	0.486	#13	0.053	Not Required	Pass
13	0.004	0.203	0.259	0.045	0.013	0.401	#21	0.190	Not Required	Pass
14	0.005	0.190	0.259	0.040	0.013	0.392	#21	0.190	Not Required	Pass
15	0.000	0.070	0.120	0.030	0.009	0.171	#21	Not Required	Not Required	Pass
16	0.000	0.063	0.120	0.027	0.009	0.168	#21	Not Required	Not Required	Pass
101	0.042	0.720	0.020	0.047	0.002	0.748	#13	0.460	Not Required	Pass
102	0.001	0.272	0.214	0.063	0.042	0.486	#13	0.053	Not Required	Pass
103	0.007	0.549	0.043	0.054	0.009	0.573	#13	0.045	Not Required	Pass
104	0.006	0.492	0.079	0.049	0.019	0.544	#13	0.080	Not Required	Pass
105	0.007	0.341	0.071	0.055	0.018	0.350	#13	0.074	Not Required	Pass
106	0.008	0.627	0.061	0.063	0.015	0.668	#13	0.045	Not Required	Pass
107	0.008	0.388	0.103	0.062	0.025	0.402	#13	0.074	Not Required	Pass
108	0.000	0.063	0.120	0.027	0.009	0.168	#21	Not Required	Not Required	Pass
109	0.004	0.051	0.057	0.002	0.001	0.109	#13	0.204	Not Required	Pass
110	0.008	0.566	0.101	0.057	0.022	0.593	#13	0.080	Not Required	Pass
111	0.000	0.070	0.120	0.030	0.009	0.171	#21	Not Required	Not Required	Pass
112	0.001	0.348	0.250	0.074	0.047	0.599	#13	0.053	Not Required	Pass
113	0.004	0.203	0.259	0.045	0.013	0.401	#21	0.190	Not Required	Pass
114	0.005	0.190	0.259	0.040	0.013	0.392	#21	0.286	Not Required	Pass
115	0.001	0.041	0.095	0.030	0.009	0.116	#21	0.169	Not Required	Pass
116	0.001	0.038	0.095	0.027	0.009	0.113	#21	0.253	Not Required	Pass

Definitions

Φ _t	Safety factor for tensile
Φ _c	Safety factor for compression
Φ _b	Safety factor for flexure
Φ _v	Safety factor for shear
E	Modulus of elasticity
F _y	Specified minimum yield stress
F _u	Specified minimum tensile strength
A	Cross-sectional area
J	Torsional constant
I _{yp}	Moment of inertia about the Y axes
I _{zp}	Moment of inertia about the Z axes
I _w	Warping constant
S _{yp}	Plastic section modulus about the Y axis
S _{zp}	Plastic section modulus about the Z axis
KL	Effective length
C _n	Buckling modification factor (from all load combinations)

L_b	Length between braced points
LST	Limited slenderness for tension
LSC	Limited slenderness for compression
LD	Limited deflection
P_n	Nominal axial strength (tension/compression)
M_n	Nominal flexural strength (about Z/Y axis)
V_n	Nominal shear strength (along Z/Y axis)
P	Design ratio in case of axial force
M_z	Design ratio in case of bending about Z axis
M_y	Design ratio in case of bending about Y axis
V_y	Design ratio in case of shear along Y axis
V_z	Design ratio in case of shear along Z axis
(P, M_z , M_y)	Design ratio in case of axial force and bending action
KL/r	Design ratio in case of section slenderness
δ	Design ratio in case of member deflection
OK	Capacity is provided
NG	Capacity is not provided

REFERENCES	CALCULATIONS	RESULTS																										
	<p>SkyCiv Foundation Design Pile Foundation</p> <p>Design Information : Design code : IBC 2021 (International Building Code) Unit System : Imperial</p>																											
	<p>Pile Input</p>  <p>Geometry</p> <p>Pile shape: rectangular $b = 48$ in - Pile width $D = 48$ in - Pile depth $L = 7$ ft - Total pile length $h_1 = 0$ ft - Lateral load height from the top of the pile, $h_2 = 0$ ft - Depth to resting surface $h_e = 0$ ft - Length of pile above the ground</p> <p>Tabulation of Soil Parameters</p> <table border="1" data-bbox="416 1102 1193 1191"> <thead> <tr> <th>Layer</th> <th>Label</th> <th>Allowable Bearing Pressure (q_a) (psf)</th> <th>Allowable Lateral Pressure (R) (psf/ft)</th> </tr> </thead> <tbody> <tr> <td>1</td> <td>Sand, silty sand, clayey sand, silty gravel & clayey gravel</td> <td>2000.000</td> <td>150.000</td> </tr> </tbody> </table> <p>Tabulation of Loads</p> <table border="1" data-bbox="676 1288 933 1458"> <thead> <tr> <th>Load Component</th> <th>ASD</th> <th>LRFD</th> </tr> </thead> <tbody> <tr> <td>P (kip)</td> <td>5.607</td> <td>8.480</td> </tr> <tr> <td>V_x (kip)</td> <td>-3.171</td> <td>-5.286</td> </tr> <tr> <td>V_z (kip)</td> <td>-0.129</td> <td>-0.218</td> </tr> <tr> <td>M_x (kipft)</td> <td>-0.381</td> <td>-0.645</td> </tr> <tr> <td>M_z (kipft)</td> <td>35.630</td> <td>59.940</td> </tr> </tbody> </table> <p>Material Properties</p> <p>$f'_{ck} = 3$ ksi - Concrete strength,</p>	Layer	Label	Allowable Bearing Pressure (q_a) (psf)	Allowable Lateral Pressure (R) (psf/ft)	1	Sand, silty sand, clayey sand, silty gravel & clayey gravel	2000.000	150.000	Load Component	ASD	LRFD	P (kip)	5.607	8.480	V_x (kip)	-3.171	-5.286	V_z (kip)	-0.129	-0.218	M_x (kipft)	-0.381	-0.645	M_z (kipft)	35.630	59.940	
Layer	Label	Allowable Bearing Pressure (q_a) (psf)	Allowable Lateral Pressure (R) (psf/ft)																									
1	Sand, silty sand, clayey sand, silty gravel & clayey gravel	2000.000	150.000																									
Load Component	ASD	LRFD																										
P (kip)	5.607	8.480																										
V_x (kip)	-3.171	-5.286																										
V_z (kip)	-0.129	-0.218																										
M_x (kipft)	-0.381	-0.645																										
M_z (kipft)	35.630	59.940																										
	<p>Required depth to resist lateral loads (ASD)</p> <p>H - Point of application of the lateral load</p> $H = h_1 + h_2 + h_e$ $H = (0 \text{ ft}) + (0 \text{ ft}) + (0 \text{ ft})$ $H = 0 \text{ ft}$ <p>Considering x-direction:</p> <p>H_o - Lateral force per length of pile,</p> $H_o = \frac{V_x}{1.57 D}$ $H_o = \frac{(-3.171 \text{ kip})}{1.57 \times (48 \text{ in})}$ $H_o = -0.50494 \text{ kip/ft}$ <p>M_o - Moment per length of pile,</p> $M_o = \frac{M_z + (V_x H)}{1.57 D}$																											

$$M_o = \frac{(35.63 \text{ kipft}) + ((-3.171 \text{ kip}) \times (0 \text{ ft}))}{1.57 \times (48 \text{ in})}$$

$$M_o = 5.6736 \text{ kipft/ft}$$

Required depth of embedment in earth:

$$L_x^3 - \left(14.14 \times \frac{H_o \times L_x}{R}\right) - \left(18.85 \times \frac{M_o}{R}\right) = 0$$

Solving the cubic equation:

$L_{e,x} = 6.3859 \text{ ft}$ - Required depth in x-direction,

Considering z-direction:

H_o - Lateral force per length of pile,

$$H_o = \frac{V_z}{1.57 b}$$

$$H_o = \frac{(-0.129 \text{ kip})}{1.57 \times (48 \text{ in})}$$

$$H_o = -0.020541 \text{ kip/ft}$$

M_o - Moment per length of pile,

$$M_o = \frac{M_x + (V_z H)}{1.57 b}$$

$$M_o = \frac{(0.381 \text{ kipft}) + ((-0.129 \text{ kip}) \times (0 \text{ ft}))}{1.57 \times (48 \text{ in})}$$

$$M_o = 0.060669 \text{ kipft/ft}$$

Required depth of embedment in earth:

$$L_z^3 - \left(14.14 \times \frac{H_o \times L_z}{R}\right) - \left(18.85 \times \frac{M_o}{R}\right) = 0$$

Solving the cubic equation:

$L_{e,z} = 1.4524 \text{ ft}$ - Required depth in z-direction,

Minimum embedded depth required:

$L_{e,req}$ - Depth of pile required,

$$L_{e,req} = \text{MAX}[L_{e,x}, L_{e,z}]$$

$$L_{e,req} = \text{MAX}[(6.3859 \text{ ft}), (1.4524 \text{ ft})]$$

$$L_{e,req} = 6.386 \text{ ft}$$

L_e - Actual embedded length of pile,

$$L_e = L - h_c - h_2$$

$$L_e = (7 \text{ ft}) - (0 \text{ ft}) - (0 \text{ ft})$$

$$L_e = 7 \text{ ft}$$

Ratio - Embedded depth

$$\text{Ratio} = \frac{L_{e,req}}{L_e}$$

$$\text{Ratio} = \frac{(6.386 \text{ ft})}{(7 \text{ ft})}$$

$$\text{Ratio} = 0.91229$$

Status: **PASS**
Ratio: **0.910**

End-bearing Capacity (ASD)

A - Pile cross-section area

$$A = b D$$

$$A = (48 \text{ in}) \times (48 \text{ in})$$

$$A = 16 \text{ ft}^2$$

q - End-bearing pressure

$$q = \frac{P_c}{A}$$

$$q = \frac{(5.607 \text{ kip})}{(16 \text{ ft}^2)}$$

$$q = 0.35044 \text{ kip/ft}^2$$

$$q = 0.35044 \text{ kip/ft}$$

Check bearing capacity ratio:

Ratio - Capacity

$$\text{Ratio} = \frac{q}{q_a}$$

$$\text{Ratio} = \frac{(0.35044 \text{ kip/ft}^2)}{(2000 \text{ psf})}$$

$$\text{Ratio} = 0.17522$$

Status: **PASS**
Ratio: **0.180**

Czerniak

Lateral Soil Pressure (ASD):

L/D - Length to least lateral dimension ratio,

$$L/D = \frac{L}{D}$$

$$L/D = \frac{(7 \text{ ft})}{(48 \text{ in})}$$

$$L/D = 1.75$$

Since $L/D \leq 10$,

Pile is short.

Considering x-direction:

$H_o = -0.50494 \text{ kip/ft}$ - Lateral force per length of pile,

$M_o = 5.6736 \text{ kipft/ft}$ - Overturning moment per length of pile,

a - Distance from resting surface to pivot point,

$$a = \frac{(4 M_o L_e) + (3 H_o L_e^2)}{(6 M_o) + (4 H_o L_e)}$$

$$a = \frac{(4 \times (5.6736 \text{ kipft/ft}) \times (7 \text{ ft})) + (3 \times (-0.50494 \text{ kip/ft}) \times (7 \text{ ft})^2)}{(6 \times (5.6736 \text{ kipft/ft})) + (4 \times (-0.50494 \text{ kip/ft}) \times (7 \text{ ft}))}$$

$$a = 4.8378 \text{ ft}$$

p - Earth pressure against the pile at distance $a/2$ from resting surface,

$$p = \frac{0.75 [(4 M_o) + (3 H_o L_e)]^2}{L_e^2 [(3 M_o) + (2 H_o L_e)]}$$

$$p = \frac{0.75 \times [(4 \times (5.6736 \text{ kipft/ft})) + (3 \times (-0.50494 \text{ kip/ft}) \times (7 \text{ ft}))]^2}{(7 \text{ ft})^2 \times [(3 \times (5.6736 \text{ kipft/ft})) + (2 \times (-0.50494 \text{ kip/ft}) \times (7 \text{ ft}))]}$$

$$p = 0.22484 \text{ kip/ft}^2$$

s - Earth pressure against the pile at distance L_e ,

$$s = \frac{6 [(2 M_o) + (H_o L_e)]}{L_e^2}$$

$$s = \frac{6 \times [(2 \times (5.6736 \text{ kipft/ft})) + ((-0.50494 \text{ kip/ft}) \times (7 \text{ ft}))]}{(7 \text{ ft})^2}$$

$$s = 0.95664 \text{ kip/ft}^2$$

Check lateral soil pressure capacity:

p_a - Allowable lateral soil pressure at depth $a/2$,

$$p_a = R \frac{a}{2}$$

$$p_a = (150 \text{ psf/ft}) \times \frac{(4.8378 \text{ ft})}{2}$$

$$p_a = 0.36284 \text{ kip/ft}^2$$

Ratio - Lateral soil capacity

$$\text{Ratio} = \frac{p}{p_a}$$

$$\text{Ratio} = \frac{(0.22484 \text{ kip/ft}^2)}{(0.36284 \text{ kip/ft}^2)}$$

$$\text{Ratio} = 0.61966$$

p_a - Allowable lateral soil pressure at depth L_e ,

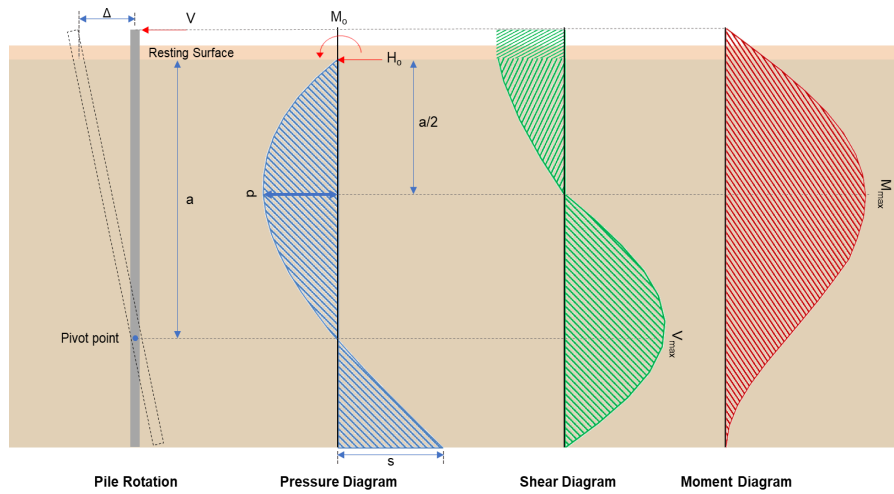
Status: **PASS**
Ratio: **0.620**

	$p_s = R L_e$ $p_s = (150 \text{ psf/ft}) \times (7 \text{ ft})$ $p_s = 1.05 \text{ kip/ft}^2$ <p>Ratio - Lateral soil capacity</p> $\text{Ratio} = \frac{s}{p_s}$ $\text{Ratio} = \frac{(0.95664 \text{ kip/ft}^2)}{(1.05 \text{ kip/ft}^2)}$ $\text{Ratio} = 0.91109$	<p>Status: PASS Ratio: 0.910</p>
	<p>Considering z-direction:</p> <p>$H_o = -0.020541 \text{ kip/ft}$ - Lateral force per length of pile, $M_o = 0.060669 \text{ kipft/ft}$ - Overturning moment per length of pile, a - Distance from resting surface to pivot point,</p> $a = \frac{(4 M_o L_e) + (3 H_o L_e^2)}{(6 M_o) + (4 H_o L_e)}$ $a = \frac{(4 \times (0.060669 \text{ kipft/ft}) \times (7 \text{ ft})) + (3 \times (-0.020541 \text{ kip/ft}) \times (7 \text{ ft})^2)}{(6 \times (0.060669 \text{ kipft/ft})) + (4 \times (-0.020541 \text{ kip/ft}) \times (7 \text{ ft}))}$ $a = 5.0239 \text{ ft}$ <p>p - Earth pressure against the pile at distance $a/2$ from resting surface,</p> $p = \frac{0.75 [(4 M_o) + (3 H_o L_e)]^2}{L_e^2 [(3 M_o) + (2 H_o L_e)]}$ $p = \frac{0.75 \times [(4 \times (0.060669 \text{ kipft/ft})) + (3 \times (-0.020541 \text{ kip/ft}) \times (7 \text{ ft}))]^2}{(7 \text{ ft})^2 \times [(3 \times (0.060669 \text{ kipft/ft})) + (2 \times (-0.020541 \text{ kip/ft}) \times (7 \text{ ft}))]}$ $p = -0.0051621 \text{ kip/ft}^2$ <p>s - Earth pressure against the pile at distance L_e,</p> $s = \frac{6 [(2 M_o) + (H_o L_e)]}{L_e^2}$ $s = \frac{6 \times [(2 \times (0.060669 \text{ kipft/ft})) + ((-0.020541 \text{ kip/ft}) \times (7 \text{ ft}))]}{(7 \text{ ft})^2}$ $s = -0.0027493 \text{ kip/ft}^2$ <p>Check lateral soil pressure capacity:</p> <p>p_a - Allowable lateral soil pressure at depth $a/2$,</p> $p_a = R \frac{a}{2}$ $p_a = (150 \text{ psf/ft}) \times \frac{(5.0239 \text{ ft})}{2}$ $p_a = 0.37679 \text{ kip/ft}^2$ <p>Ratio - Lateral soil capacity</p> $\text{Ratio} = \frac{p}{p_a}$ $\text{Ratio} = \frac{(-0.0051621 \text{ kip/ft}^2)}{(0.37679 \text{ kip/ft}^2)}$ $\text{Ratio} = -0.0137$ <p>p_s - Allowable lateral soil pressure at depth L_e,</p> $p_s = R L_e$ $p_s = (150 \text{ psf/ft}) \times (7 \text{ ft})$ $p_s = 1.05 \text{ kip/ft}^2$ <p>Ratio - Lateral soil capacity</p> $\text{Ratio} = \frac{s}{p_s}$	<p>Status: PASS Ratio: -0.010</p>

$$\text{Ratio} = \frac{(-0.0027493 \text{ kip/ft}^2)}{(1.05 \text{ kip/ft}^2)}$$

$$\text{Ratio} = -0.0026183$$

Status: **PASS**
Ratio: **0.000**



Shear force and Bending moment (x-direction, LRFD)

H_o - Lateral force per length of pile,

$$H_o = \frac{V_e}{1.57 D}$$

$$H_o = \frac{(-5.286 \text{ kip})}{1.57 \times (48 \text{ in})}$$

$$H_o = -0.84172 \text{ kip/ft}$$

M_o - Moment per length of pile,

$$M_o = \frac{M_z + (V_x H)}{1.57 D}$$

$$M_o = \frac{(59.94 \text{ kipft}) + ((-5.286 \text{ kip}) \times (0 \text{ ft}))}{1.57 \times (48 \text{ in})}$$

$$M_o = 9.5446 \text{ kipft/ft}$$

E - Distance from lateral load to resisting surface,

$$E = \frac{M_o}{H_o}$$

$$E = \frac{(9.5446 \text{ kipft/ft})}{(-0.84172 \text{ kip/ft})}$$

$$E = 11.339 \text{ ft}$$

a - Distance from resting surface to pivot point,

$$a = \frac{(4 M_o L_e) + (3 H_o L_e^2)}{(6 M_o) + (4 H_o L_e)}$$

$$a = \frac{(4 \times (9.5446 \text{ kipft/ft}) \times (7 \text{ ft})) + (3 \times (-0.84172 \text{ kip/ft}) \times (7 \text{ ft})^2)}{(6 \times (9.5446 \text{ kipft/ft})) + (4 \times (-0.84172 \text{ kip/ft}) \times (7 \text{ ft}))}$$

$$a = 4.8367 \text{ ft}$$

V_{max} - Max shear force located at depth a ,

$$V_{max} = (H_o D) \left[1 - \left[3 \left(\frac{4 E}{L_e} + 3 \right) \left(\frac{a}{L_e} \right)^2 \right] + \left[4 \left(\frac{3 E}{L_e} + 2 \right) \left(\frac{a}{L_e} \right)^3 \right] \right]$$

$$V_{max} = ((-0.84172 \text{ kip/ft}) \times (48 \text{ in})) \times \left[1 - \left[3 \times \left(\frac{4 \times (11.339 \text{ ft})}{(7 \text{ ft})} + 3 \right) \times \left(\frac{(4.8367 \text{ ft})}{(7 \text{ ft})} \right)^2 \right] + \left[4 \times \left(\frac{3 \times (11.339 \text{ ft})}{(7 \text{ ft})} + 2 \right) \times \left(\frac{(4.8367 \text{ ft})}{(7 \text{ ft})} \right)^3 \right] \right]$$

$$V_{max} = 11.871 \text{ kip}$$

M_{max} - Max bending moment located at depth $a/2$,

$$M_{max} = (H_o D L_e) \left[\left(\frac{E}{L_e} + \frac{a}{2 L_e} \right) - \left[\left(\frac{4E}{L_e} + 3 \right) \left(\frac{a}{2 L_e} \right)^3 \right] + \left[\left(\frac{3E}{L_e} + 2 \right) \left(\frac{a}{2 L_e} \right)^4 \right] \right]$$

$$M_{max} = ((-0.84172 \text{ kip/ft}) \times (48 \text{ in}) \times (7 \text{ ft})) \times \left[\left(\frac{(11.339 \text{ ft})}{(7 \text{ ft})} + \frac{(4.8367 \text{ ft})}{2 \times (7 \text{ ft})} \right) - \left[\left(\frac{4 \times (11.339 \text{ ft})}{(7 \text{ ft})} + 3 \right) \times \left(\frac{(4.8367 \text{ ft})}{2 \times (7 \text{ ft})} \right)^3 \right] + \left[\left(\frac{3 \times (11.339 \text{ ft})}{(7 \text{ ft})} + 2 \right) \times \left(\frac{(4.8367 \text{ ft})}{2 \times (7 \text{ ft})} \right)^4 \right] \right]$$

$$M_{max} = 39.411 \text{ kipft}$$

Shear force and Bending moment (z-direction, LRFD)

H_o - Lateral force per length of pile,

$$H_o = \frac{V_z}{1.57 b}$$

$$H_o = \frac{(-0.218 \text{ kip})}{1.57 \times (48 \text{ in})}$$

$$H_o = -0.034713 \text{ kip/ft}$$

M_o - Moment per length of pile,

$$M_o = \frac{M_x + (V_z H)}{1.57 b}$$

$$M_o = \frac{(0.645 \text{ kipft}) + ((-0.218 \text{ kip}) \times (0 \text{ ft}))}{1.57 \times (48 \text{ in})}$$

$$M_o = 0.10271 \text{ kipft/ft}$$

E - Distance from lateral load to resisting surface,

$$E = \frac{M_o}{H_o}$$

$$E = \frac{(0.10271 \text{ kipft/ft})}{(-0.034713 \text{ kip/ft})}$$

$$E = 2.9587 \text{ ft}$$

a - Distance from resting surface to pivot point,

$$a = \frac{(4 M_o L_e) + (3 H_o L_e^2)}{(6 M_o) + (4 H_o L_e)}$$

$$a = \frac{(4 \times (0.10271 \text{ kipft/ft}) \times (7 \text{ ft})) + (3 \times (-0.034713 \text{ kip/ft}) \times (7 \text{ ft})^2)}{(6 \times (0.10271 \text{ kipft/ft})) + (4 \times (-0.034713 \text{ kip/ft}) \times (7 \text{ ft}))}$$

$$a = 5.0237 \text{ ft}$$

V_{max} - Max shear force located at depth a ,

$$V_{max} = (H_o b) \left[1 - \left[3 \left(\frac{4E}{L_e} + 3 \right) \left(\frac{a}{L_e} \right)^2 \right] + \left[4 \left(\frac{3E}{L_e} + 2 \right) \left(\frac{a}{L_e} \right)^3 \right] \right]$$

$$V_{max} = ((-0.034713 \text{ kip/ft}) \times (48 \text{ in})) \times \left[1 - \left[3 \times \left(\frac{4 \times (2.9587 \text{ ft})}{(7 \text{ ft})} + 3 \right) \times \left(\frac{(5.0237 \text{ ft})}{(7 \text{ ft})} \right)^2 \right] + \left[4 \times \left(\frac{3 \times (2.9587 \text{ ft})}{(7 \text{ ft})} + 2 \right) \times \left(\frac{(5.0237 \text{ ft})}{(7 \text{ ft})} \right)^3 \right] \right]$$

$$V_{max} = 0.1966 \text{ kip}$$

M_{max} - Max bending moment located at depth $a/2$,

$$M_{max} = (H_o b L_e) \left[\left(\frac{E}{L_e} + \frac{a}{2 L_e} \right) - \left[\left(\frac{4E}{L_e} + 3 \right) \left(\frac{a}{2 L_e} \right)^3 \right] + \left[\left(\frac{3E}{L_e} + 2 \right) \left(\frac{a}{2 L_e} \right)^4 \right] \right]$$

$$M_{max} = ((-0.034713 \text{ kip/ft}) \times (48 \text{ in}) \times (7 \text{ ft})) \times \left[\left(\frac{(2.9587 \text{ ft})}{(7 \text{ ft})} + \frac{(5.0237 \text{ ft})}{2 \times (7 \text{ ft})} \right) - \left[\left(\frac{4 \times (2.9587 \text{ ft})}{(7 \text{ ft})} + 3 \right) \times \left(\frac{(5.0237 \text{ ft})}{2 \times (7 \text{ ft})} \right)^3 \right] + \left[\left(\frac{3 \times (2.9587 \text{ ft})}{(7 \text{ ft})} + 2 \right) \times \left(\frac{(5.0237 \text{ ft})}{2 \times (7 \text{ ft})} \right)^4 \right] \right]$$

$$M_{max} = 0.60161 \text{ kipft}$$

Minimum Reinforcement Check (LRFD)

Parameters:

$f'_{ck} = 3 \text{ ksi}$ - Concrete strength,
 $f_{yk} = 60 \text{ ksi}$ - Longitudinal reinforcement strength,
 $\phi = 0.65$ - Reduction factor for axial strength,
 $\alpha = 0.8$ - Alpha factor for axial strength,
 $A_g = 2304 \text{ in}^2$ - Gross area of concrete,

Table 22.4.2.1

Longitudinal reinforcement:

Required reinforcement due to axial load, $A_{st,required}$

22.4.2.2, 10.6.1.1

$A_{st,required}$

$$A_{st,required} = \text{Min} \left[\frac{\frac{P}{\phi \alpha} - (0.85 f'_{ck} A_g)}{f_{yk} - (0.85 f'_{ck})}, (0.08 A_g) \right]$$

$$A_{st,required} = \text{Min} \left[\frac{\frac{(8.48 \text{ kip})}{(0.65) \times (0.8)} - (0.85 \times (3 \text{ ksi}) \times (2304 \text{ in}^2))}{(60 \text{ ksi}) - (0.85 \times (3 \text{ ksi}))}, (0.08 \times (2304 \text{ in}^2)) \right]$$

$$A_{st,required} = -101.98 \text{ in}^2$$

A_{min} - Governing minimum reinforcement area,

$$A_{min} = \text{Max} [A_{st,required}, (0.0018 A_g)]$$

$$A_{min} = \text{Max} [(-101.98 \text{ in}^2), (0.0018 \times (2304 \text{ in}^2))]$$

$$A_{min} = 4.1472 \text{ in}^2$$

n_{rebar} - Required number of reinforcement,

$$n_{rebar} = \frac{A_{min}}{A_{rebar}}$$

$$n_{rebar} = \frac{(4.1472 \text{ in}^2)}{(0.3068 \text{ in}^2)}$$

$$n_{rebar} = 14$$

A_{st} - Actual total reinforcement area,

$$A_{st} = n_{rebar} \frac{\pi d_{bar}^2}{4}$$

$$A_{st} = (14) \times \frac{\pi \times (0.625 \text{ in})^2}{4}$$

$$A_{st} = 4.2951 \text{ in}^2$$

Ratio - Capacity

$$\text{Ratio} = \frac{A_{min}}{A_{st}}$$

$$\text{Ratio} = \frac{(4.1472 \text{ in}^2)}{(4.2951 \text{ in}^2)}$$

$$\text{Ratio} = 0.96556$$

25.2.3

s_{rebar} - Minimum spacing of reinforcement,

$$s_{rebar} = \text{Max} [1.5, (1.5 d_{bar})]$$

$$s_{rebar} = \text{Max} [1.5, (1.5 \times (0.625 \text{ in}))]$$

$$s_{rebar} = 1.5 \text{ in}$$

Ties:

25.7.2.2 Since longitudinal reinforcement is \leq No. 10: Use #3(0.375 in)

25.7.2.1 s_{ties} - Maximum spacing of ties,

$$s_{ties} = \text{Min} [(16 d_{bar}), (48 d_{ties}), \text{Min} (D, b)]$$

$$s_{ties} = \text{Min} [(16 \times (0.625 \text{ in})), (48 \times (0.375 \text{ in})), \text{Min} ((48 \text{ in}), (48 \text{ in}))]$$

$$s_{ties} = 10 \text{ in}$$

Summary:

Main reinforcement: 14 - #5 (0.625 in)

Status: **PASS**
Ratio: **0.970**

Ties: #3(0.375 in) - 10 in

Axial Compression Strength (ACI 318-19, LRFD)

22.4.2.2

ϕP_N - Allowable axial compressive strength

$$\phi P_N = \phi 0.80 [(0.85 f'_{ck} [A_g - A_{st}]) + (f_{yk} A_{st})]$$

$$\phi P_N = (0.65) \times 0.80 \times [(0.85 \times (3 \text{ ksi}) \times [(2304 \text{ in}^2) - (4.2951 \text{ in}^2)]) + ((60 \text{ ksi}) \times (4.2951 \text{ in}^2))]$$

$$\phi P_N = 3183.4 \text{ kip}$$

Ratio - Capacity

$$\text{Ratio} = \frac{P}{\phi P_N}$$

$$\text{Ratio} = \frac{(8.48 \text{ kip})}{(3183.4 \text{ kip})}$$

$$\text{Ratio} = 0.0026638$$

Status: **PASS**
Ratio: **0.000**

Shear Strength (ACI 318-19, LRFD)

Parameters:

22.5.2.2

$b_w = 48 \text{ in}$ - Effective width,
 d - Effective depth

$$d = 0.80 D$$

$$d = 0.80 \times (48 \text{ in})$$

$$d = 38.4 \text{ in}$$

22.5.5.1.3

λ_s - size effect modification factor

$$\lambda_s = \text{MIN} \left[\sqrt{\frac{2}{1 + \frac{d}{10}}}, 1 \right]$$

$$\lambda_s = \text{MIN} \left[\sqrt{\frac{2}{1 + \frac{(38.4 \text{ in})}{10}}}, 1 \right]$$

$$\lambda_s = 0.64282$$

22.5.5.1.1

The following variables were converted to be consistent with empirical formula $f'_{ck} = 3 \text{ ksi} \rightarrow 3000 \text{ psi}$,
 $V_{c,max}$ - Max shear strength of concrete

$$V_{c,max} = 5 \lambda_s \sqrt{f'_{ck}} b_w d$$

$$V_{c,max} = 5 \times (0.64282) \times \sqrt{(3000 \text{ psi})} \times (48 \text{ in}) \times (38.4 \text{ in})$$

$$V_{c,max} = 324.49 \text{ kip}$$

22.5.5.1.1(a)

The following variables were converted to be consistent with empirical formula $f'_{ck} = 3 \text{ ksi} \rightarrow 3000 \text{ psi}$, $P = 8.48 \text{ kip} \rightarrow 8480 \text{ lbf}$,
 $V_{c,a}$ - Shear strength of concrete (a)

$$V_{c,a} = \left[2 \lambda_s \sqrt{f'_{ck}} + \frac{P}{6 A_g} \right] b_w d$$

$$V_{c,a} = \left[2 \times (0.64282) \times \sqrt{(3000 \text{ psi})} + \frac{(8480 \text{ lbf})}{6 \times (2304 \text{ in}^2)} \right] \times (48 \text{ in}) \times (38.4 \text{ in})$$

$$V_{c,a} = 130.92 \text{ kip}$$

22.5.5.1.2

The following variables were converted to be consistent with empirical formula $f'_{ck} = 3 \text{ ksi} \rightarrow 3000 \text{ psi}$,
 $V_{c,b}$ - Shear strength of concrete (b)

$$V_{c,b} = \left[2 \lambda_s \sqrt{f'_{ck}} + (0.05 f'_{ck}) \right] b_w d$$

$$V_{c,b} = \left[2 \times (0.64282) \times \sqrt{(3000 \text{ psi})} + (0.05 \times (3000 \text{ psi})) \right] \times (48 \text{ in}) \times (38.4 \text{ in})$$

$$V_{c,b} = 406.27 \text{ kip}$$

V_c - Governing shear strength of concrete

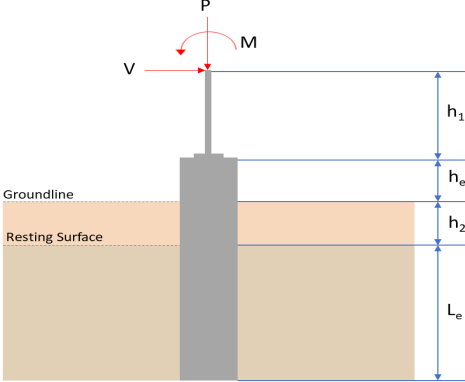
$$V_c = \text{Min}[V_{c,max}, V_{c,a}, V_{c,b}]$$

$$V_c = \text{Min}[(324.49 \text{ kip}), (130.92 \text{ kip}), (406.27 \text{ kip})]$$

$$V_c = 130.92 \text{ kip}$$

<p>22.5.1.2</p>	<p>The following variables were converted to be consistent with empirical formula $f'_{ck} = 3 \text{ ksi} \rightarrow 3000 \text{ psi}$, $V_{s,a}$ - Shear strength of steel (a)</p> $V_{s,a} = 8 \sqrt{f'_{ck}} b_w d$ $V_{s,a} = 8 \times \sqrt{(3000 \text{ psi})} \times (48 \text{ in}) \times (38.4 \text{ in})$ $V_{s,a} = 807.65 \text{ kip}$ <p>A_v - Ties rebar area,</p> $A_v = \frac{\pi d_{ties}^2}{4}$ $A_v = \frac{\pi \times (0.375 \text{ in})^2}{4}$ $A_v = 0.11045 \text{ in}^2$ <p>22.5.8.5.3 $V_{s,b}$ - Shear strength of steel (b)</p> $V_{s,b} = \frac{2 A_v f_{yt} d}{s_{ties}}$ $V_{s,b} = \frac{2 \times (0.11045 \text{ in}^2) \times (60 \text{ ksi}) \times (38.4 \text{ in})}{(10 \text{ in})}$ $V_{s,b} = 50.894 \text{ kip}$ <p>V_s - Governing shear strength of steel</p> $V_s = \text{MIN}[V_{s,a}, V_{s,b}]$ $V_s = \text{MIN}[(807.65 \text{ kip}), (50.894 \text{ kip})]$ $V_s = 50.894 \text{ kip}$ <p>22.5.1.1 ϕV_n - Allowable shear strength</p> $\phi V_n = \phi (V_c + V_s)$ $\phi V_n = (0.65) \times ((130.92 \text{ kip}) + (50.894 \text{ kip}))$ $\phi V_n = 118.18 \text{ kip}$ <p>Considering x-direction:</p> <p>$V_{max} = 11.871 \text{ kip}$ - Maximum shear force in the x-direction, Ratio - Capacity</p> $\text{Ratio} = \frac{V_{max}}{\phi V_n}$ $\text{Ratio} = \frac{(11.871 \text{ kip})}{(118.18 \text{ kip})}$ $\text{Ratio} = 0.10045$ <p>Considering z-direction:</p> <p>$V_{max} = 0.1966 \text{ kip}$ - Maximum shear force in the z-direction, Ratio - Capacity</p> $\text{Ratio} = \frac{V_{max}}{\phi V_n}$ $\text{Ratio} = \frac{(0.1966 \text{ kip})}{(118.18 \text{ kip})}$ $\text{Ratio} = 0.0016636$	<p>Status: PASS Ratio: 0.100</p> <p>Status: PASS Ratio: 0.000</p>
	<p>Flexural Strength (ACI 318-19, LFRD)</p> <p>S_m - Section modulus</p> $S_m = \frac{b D^2}{6}$ $S_m = \frac{(48 \text{ in}) \times (48 \text{ in})^2}{6}$ $S_m = 18432 \text{ in}^3$	

<p>14.5.2.1b</p>	<p>$\lambda = 1$ - Concrete modification factor (Normal concrete), Allowable flexural strength: M_n shall be the lesser of: $\phi M_{n,1}$</p> $\phi M_{n,1} = \phi \times 5 \times \lambda \times \sqrt{f'_c} \times S_m$ $\phi M_{n,1} = 0.65 \times 5 \times 1 \times \sqrt{3\text{ksi}} \times 18432.001\text{in}^3$ $\phi M_{n,1} = 273.423\text{kipft}$ <p>$\phi M_{n,2}$</p> $\phi M_{n,2} = \phi \times 0.85 \times f'_c \times S_m$ $\phi M_{n,2} = (0.65) \times 0.85 \times (3\text{ksi}) \times (18432\text{in}^3)$ $\phi M_{n,2} = 2545.9\text{kipft}$ <p>Therefore, ϕM_n - Allowable flexural strength,</p> $\phi M_n = \text{MIN}[\phi M_{n,1}, \phi M_{n,2}]$ $\phi M_n = \text{MIN}[(273.42\text{kipft}), (2545.9\text{kipft})]$ $\phi M_n = 273.42\text{kipft}$ <p>Considering x-direction: $M_{max} = 39.411\text{kipft}$ - Maximum moment in the x-direction, Ratio - Capacity</p> $\text{Ratio} = \frac{M_{max}}{\phi M_n}$ $\text{Ratio} = \frac{(39.411\text{kipft})}{(273.42\text{kipft})}$ $\text{Ratio} = 0.14414$	<p>Status: PASS Ratio: 0.140</p>
	<p>Considering z-direction: $M_{max} = 0.60161\text{kipft}$ - Maximum moment in the z-direction, Ratio - Capacity</p> $\text{Ratio} = \frac{M_{max}}{\phi M_n}$ $\text{Ratio} = \frac{(0.60161\text{kipft})}{(273.42\text{kipft})}$ $\text{Ratio} = 0.0022003$	<p>Status: PASS Ratio: 0.000</p>

REFERENCES	CALCULATIONS	RESULTS																										
	<p>SkyCiv Foundation Design Pile Foundation</p> <p>Design Information : Design code : IBC 2021 (International Building Code) Unit System : Imperial</p>																											
	<p>Pile Input</p>  <p>Geometry Pile shape: rectangular $b = 48$ in - Pile width $D = 48$ in - Pile depth $L = 7$ ft - Total pile length $h_1 = 0$ ft - Lateral load height from the top of the pile, $h_2 = 0$ ft - Depth to resting surface $h_e = 0$ ft - Length of pile above the ground</p> <p>Tabulation of Soil Parameters</p> <table border="1" data-bbox="416 1102 1193 1191"> <thead> <tr> <th>Layer</th> <th>Label</th> <th>Allowable Bearing Pressure (q_a) (psf)</th> <th>Allowable Lateral Pressure (R) (psf/ft)</th> </tr> </thead> <tbody> <tr> <td>1</td> <td>Sand, silty sand, clayey sand, silty gravel & clayey gravel</td> <td>2000.000</td> <td>150.000</td> </tr> </tbody> </table> <p>Tabulation of Loads</p> <table border="1" data-bbox="676 1288 935 1458"> <thead> <tr> <th>Load Component</th> <th>ASD</th> <th>LRFD</th> </tr> </thead> <tbody> <tr> <td>P (kip)</td> <td>5.607</td> <td>8.480</td> </tr> <tr> <td>V_x (kip)</td> <td>-3.171</td> <td>-5.286</td> </tr> <tr> <td>V_z (kip)</td> <td>0.129</td> <td>0.218</td> </tr> <tr> <td>M_x (kipft)</td> <td>0.381</td> <td>0.645</td> </tr> <tr> <td>M_z (kipft)</td> <td>35.630</td> <td>59.941</td> </tr> </tbody> </table> <p>Material Properties $f'_{ck} = 3$ ksi - Concrete strength,</p>	Layer	Label	Allowable Bearing Pressure (q_a) (psf)	Allowable Lateral Pressure (R) (psf/ft)	1	Sand, silty sand, clayey sand, silty gravel & clayey gravel	2000.000	150.000	Load Component	ASD	LRFD	P (kip)	5.607	8.480	V_x (kip)	-3.171	-5.286	V_z (kip)	0.129	0.218	M_x (kipft)	0.381	0.645	M_z (kipft)	35.630	59.941	
Layer	Label	Allowable Bearing Pressure (q_a) (psf)	Allowable Lateral Pressure (R) (psf/ft)																									
1	Sand, silty sand, clayey sand, silty gravel & clayey gravel	2000.000	150.000																									
Load Component	ASD	LRFD																										
P (kip)	5.607	8.480																										
V_x (kip)	-3.171	-5.286																										
V_z (kip)	0.129	0.218																										
M_x (kipft)	0.381	0.645																										
M_z (kipft)	35.630	59.941																										
	<p>Required depth to resist lateral loads (ASD) H - Point of application of the lateral load</p> $H = h_1 + h_2 + h_e$ $H = (0 \text{ ft}) + (0 \text{ ft}) + (0 \text{ ft})$ $H = 0 \text{ ft}$ <p>Considering x-direction: H_o - Lateral force per length of pile,</p> $H_o = \frac{V_x}{1.57 D}$ $H_o = \frac{(-3.171 \text{ kip})}{1.57 \times (48 \text{ in})}$ $H_o = -0.50494 \text{ kip/ft}$ <p>M_o - Moment per length of pile,</p> $M_o = \frac{M_z + (V_x H)}{1.57 D}$																											

$$M_o = \frac{(35.63 \text{ kipft}) + ((-3.171 \text{ kip}) \times (0 \text{ ft}))}{1.57 \times (48 \text{ in})}$$

$$M_o = 5.6736 \text{ kipft/ft}$$

Required depth of embedment in earth:

$$L_x^3 - \left(14.14 \times \frac{H_o \times L_x}{R}\right) - \left(18.85 \times \frac{M_o}{R}\right) = 0$$

Solving the cubic equation:

$L_{e,x} = 6.3859 \text{ ft}$ - Required depth in x-direction,

Considering z-direction:

H_o - Lateral force per length of pile,

$$H_o = \frac{V_z}{1.57 b}$$

$$H_o = \frac{(0.129 \text{ kip})}{1.57 \times (48 \text{ in})}$$

$$H_o = 0.020541 \text{ kip/ft}$$

M_o - Moment per length of pile,

$$M_o = \frac{M_x + (V_z H)}{1.57 b}$$

$$M_o = \frac{(0.381 \text{ kipft}) + ((0.129 \text{ kip}) \times (0 \text{ ft}))}{1.57 \times (48 \text{ in})}$$

$$M_o = 0.060669 \text{ kipft/ft}$$

Required depth of embedment in earth:

$$L_z^3 - \left(14.14 \times \frac{H_o \times L_z}{R}\right) - \left(18.85 \times \frac{M_o}{R}\right) = 0$$

Solving the cubic equation:

$L_{e,z} = 1.9343 \text{ ft}$ - Required depth in z-direction,

Minimum embedded depth required:

$L_{e,req}$ - Depth of pile required,

$$L_{e,req} = \text{MAX}[L_{e,x}, L_{e,z}]$$

$$L_{e,req} = \text{MAX}[(6.3859 \text{ ft}), (1.9343 \text{ ft})]$$

$$L_{e,req} = 6.386 \text{ ft}$$

L_e - Actual embedded length of pile,

$$L_e = L - h_c - h_2$$

$$L_e = (7 \text{ ft}) - (0 \text{ ft}) - (0 \text{ ft})$$

$$L_e = 7 \text{ ft}$$

Ratio - Embedded depth

$$\text{Ratio} = \frac{L_{e,req}}{L_e}$$

$$\text{Ratio} = \frac{(6.386 \text{ ft})}{(7 \text{ ft})}$$

$$\text{Ratio} = 0.91229$$

Status: **PASS**
Ratio: **0.910**

End-bearing Capacity (ASD)

A - Pile cross-section area

$$A = b D$$

$$A = (48 \text{ in}) \times (48 \text{ in})$$

$$A = 16 \text{ ft}^2$$

q - End-bearing pressure

$$q = \frac{P_c}{A}$$

$$q = \frac{(5.607 \text{ kip})}{(16 \text{ ft}^2)}$$

$$q = 0.35044 \text{ kip/ft}^2$$

$$q = 0.35044 \text{ kip/ft}$$

Check bearing capacity ratio:

Ratio - Capacity

$$\text{Ratio} = \frac{q}{q_a}$$

$$\text{Ratio} = \frac{(0.35044 \text{ kip/ft}^2)}{(2000 \text{ psf})}$$

$$\text{Ratio} = 0.17522$$

Status: **PASS**
Ratio: **0.180**

Czerniak

Lateral Soil Pressure (ASD):

L/D - Length to least lateral dimension ratio,

$$L/D = \frac{L}{D}$$

$$L/D = \frac{(7 \text{ ft})}{(48 \text{ in})}$$

$$L/D = 1.75$$

Since $L/D \leq 10$,

Pile is short.

Considering x-direction:

$H_o = -0.50494 \text{ kip/ft}$ - Lateral force per length of pile,

$M_o = 5.6736 \text{ kipft/ft}$ - Overturning moment per length of pile,

a - Distance from resting surface to pivot point,

$$a = \frac{(4 M_o L_e) + (3 H_o L_e^2)}{(6 M_o) + (4 H_o L_e)}$$

$$a = \frac{(4 \times (5.6736 \text{ kipft/ft}) \times (7 \text{ ft})) + (3 \times (-0.50494 \text{ kip/ft}) \times (7 \text{ ft})^2)}{(6 \times (5.6736 \text{ kipft/ft})) + (4 \times (-0.50494 \text{ kip/ft}) \times (7 \text{ ft}))}$$

$$a = 4.8378 \text{ ft}$$

p - Earth pressure against the pile at distance $a/2$ from resting surface,

$$p = \frac{0.75 [(4 M_o) + (3 H_o L_e)]^2}{L_e^2 [(3 M_o) + (2 H_o L_e)]}$$

$$p = \frac{0.75 \times [(4 \times (5.6736 \text{ kipft/ft})) + (3 \times (-0.50494 \text{ kip/ft}) \times (7 \text{ ft}))]^2}{(7 \text{ ft})^2 \times [(3 \times (5.6736 \text{ kipft/ft})) + (2 \times (-0.50494 \text{ kip/ft}) \times (7 \text{ ft}))]}$$

$$p = 0.22484 \text{ kip/ft}^2$$

s - Earth pressure against the pile at distance L_e ,

$$s = \frac{6 [(2 M_o) + (H_o L_e)]}{L_e^2}$$

$$s = \frac{6 \times [(2 \times (5.6736 \text{ kipft/ft})) + ((-0.50494 \text{ kip/ft}) \times (7 \text{ ft}))]}{(7 \text{ ft})^2}$$

$$s = 0.95664 \text{ kip/ft}^2$$

Check lateral soil pressure capacity:

p_a - Allowable lateral soil pressure at depth $a/2$,

$$p_a = R \frac{a}{2}$$

$$p_a = (150 \text{ psf/ft}) \times \frac{(4.8378 \text{ ft})}{2}$$

$$p_a = 0.36284 \text{ kip/ft}^2$$

Ratio - Lateral soil capacity

$$\text{Ratio} = \frac{p}{p_a}$$

$$\text{Ratio} = \frac{(0.22484 \text{ kip/ft}^2)}{(0.36284 \text{ kip/ft}^2)}$$

$$\text{Ratio} = 0.61966$$

p_a - Allowable lateral soil pressure at depth L_e ,

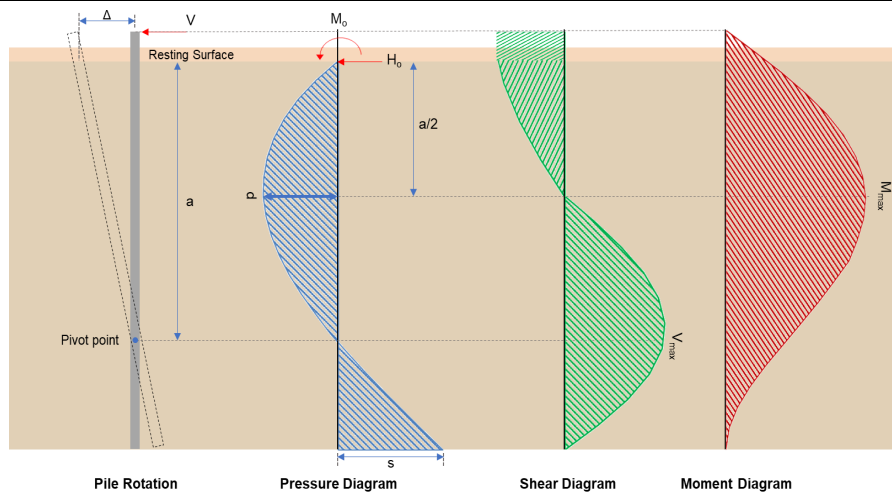
Status: **PASS**
Ratio: **0.620**

	$p_s = R L_e$ $p_s = (150 \text{ psf/ft}) \times (7 \text{ ft})$ $p_s = 1.05 \text{ kip/ft}^2$ <p>Ratio - Lateral soil capacity</p> $\text{Ratio} = \frac{s}{p_s}$ $\text{Ratio} = \frac{(0.95664 \text{ kip/ft}^2)}{(1.05 \text{ kip/ft}^2)}$ $\text{Ratio} = 0.91109$	<p>Status: PASS Ratio: 0.910</p>
	<p>Considering z-direction:</p> <p>$H_o = 0.020541 \text{ kip/ft}$ - Lateral force per length of pile, $M_o = 0.060669 \text{ kipft/ft}$ - Overturning moment per length of pile, a - Distance from resting surface to pivot point,</p> $a = \frac{(4 M_o L_e) + (3 H_o L_e^2)}{(6 M_o) + (4 H_o L_e)}$ $a = \frac{(4 \times (0.060669 \text{ kipft/ft}) \times (7 \text{ ft})) + (3 \times (0.020541 \text{ kip/ft}) \times (7 \text{ ft})^2)}{(6 \times (0.060669 \text{ kipft/ft})) + (4 \times (0.020541 \text{ kip/ft}) \times (7 \text{ ft}))}$ $a = 5.0239 \text{ ft}$ <p>p - Earth pressure against the pile at distance $a/2$ from resting surface,</p> $p = \frac{0.75 [(4 M_o) + (3 H_o L_e)]^2}{L_e^2 [(3 M_o) + (2 H_o L_e)]}$ $p = \frac{0.75 \times [(4 \times (0.060669 \text{ kipft/ft})) + (3 \times (0.020541 \text{ kip/ft}) \times (7 \text{ ft}))]^2}{(7 \text{ ft})^2 \times [(3 \times (0.060669 \text{ kipft/ft})) + (2 \times (0.020541 \text{ kip/ft}) \times (7 \text{ ft}))]}$ $p = 0.014809 \text{ kip/ft}^2$ <p>s - Earth pressure against the pile at distance L_e,</p> $s = \frac{6 [(2 M_o) + (H_o L_e)]}{L_e^2}$ $s = \frac{6 \times [(2 \times (0.060669 \text{ kipft/ft})) + ((0.020541 \text{ kip/ft}) \times (7 \text{ ft}))]}{(7 \text{ ft})^2}$ $s = 0.032465 \text{ kip/ft}^2$ <p>Check lateral soil pressure capacity:</p> <p>p_a - Allowable lateral soil pressure at depth $a/2$,</p> $p_a = R \frac{a}{2}$ $p_a = (150 \text{ psf/ft}) \times \frac{(5.0239 \text{ ft})}{2}$ $p_a = 0.37679 \text{ kip/ft}^2$ <p>Ratio - Lateral soil capacity</p> $\text{Ratio} = \frac{p}{p_a}$ $\text{Ratio} = \frac{(0.014809 \text{ kip/ft}^2)}{(0.37679 \text{ kip/ft}^2)}$ $\text{Ratio} = 0.039303$ <p>p_s - Allowable lateral soil pressure at depth L_e,</p> $p_s = R L_e$ $p_s = (150 \text{ psf/ft}) \times (7 \text{ ft})$ $p_s = 1.05 \text{ kip/ft}^2$ <p>Ratio - Lateral soil capacity</p> $\text{Ratio} = \frac{s}{p_s}$	<p>Status: PASS Ratio: 0.040</p>

$$Ratio = \frac{(0.032465 \text{ kip/ft}^2)}{(1.05 \text{ kip/ft}^2)}$$

$$Ratio = 0.030919$$

Status: **PASS**
Ratio: **0.030**



Shear force and Bending moment (x-direction, LRFD)

H_o - Lateral force per length of pile,

$$H_o = \frac{V_e}{1.57 D}$$

$$H_o = \frac{(-5.286 \text{ kip})}{1.57 \times (48 \text{ in})}$$

$$H_o = -0.84172 \text{ kip/ft}$$

M_o - Moment per length of pile,

$$M_o = \frac{M_z + (V_x H)}{1.57 D}$$

$$M_o = \frac{(59.941 \text{ kipft}) + ((-5.286 \text{ kip}) \times (0 \text{ ft}))}{1.57 \times (48 \text{ in})}$$

$$M_o = 9.5447 \text{ kipft/ft}$$

E - Distance from lateral load to resisting surface,

$$E = \frac{M_o}{H_o}$$

$$E = \frac{(9.5447 \text{ kipft/ft})}{(-0.84172 \text{ kip/ft})}$$

$$E = 11.34 \text{ ft}$$

a - Distance from resting surface to pivot point,

$$a = \frac{(4 M_o L_e) + (3 H_o L_e^2)}{(6 M_o) + (4 H_o L_e)}$$

$$a = \frac{(4 \times (9.5447 \text{ kipft/ft}) \times (7 \text{ ft})) + (3 \times (-0.84172 \text{ kip/ft}) \times (7 \text{ ft})^2)}{(6 \times (9.5447 \text{ kipft/ft})) + (4 \times (-0.84172 \text{ kip/ft}) \times (7 \text{ ft}))}$$

$$a = 4.8367 \text{ ft}$$

V_{max} - Max shear force located at depth a ,

$$V_{max} = (H_o D) \left[1 - \left[3 \left(\frac{4 E}{L_e} + 3 \right) \left(\frac{a}{L_e} \right)^2 \right] + \left[4 \left(\frac{3 E}{L_e} + 2 \right) \left(\frac{a}{L_e} \right)^3 \right] \right]$$

$$V_{max} = ((-0.84172 \text{ kip/ft}) \times (48 \text{ in})) \times \left[1 - \left[3 \times \left(\frac{4 \times (11.34 \text{ ft})}{(7 \text{ ft})} + 3 \right) \times \left(\frac{(4.8367 \text{ ft})}{(7 \text{ ft})} \right)^2 \right] + \left[4 \times \left(\frac{3 \times (11.34 \text{ ft})}{(7 \text{ ft})} + 2 \right) \times \left(\frac{(4.8367 \text{ ft})}{(7 \text{ ft})} \right)^3 \right] \right]$$

$$V_{max} = 11.871 \text{ kip}$$

M_{max} - Max bending moment located at depth $a/2$,

$$M_{max} = (H_o D L_e) \left[\left(\frac{E}{L_e} + \frac{a}{2 L_e} \right) - \left[\left(\frac{4E}{L_e} + 3 \right) \left(\frac{a}{2 L_e} \right)^3 + \left[\left(\frac{3E}{L_e} + 2 \right) \left(\frac{a}{2 L_e} \right)^4 \right] \right] \right]$$

$$M_{max} = ((-0.84172 \text{ kip/ft}) \times (48 \text{ in}) \times (7 \text{ ft})) \times \left[\left(\frac{(11.34 \text{ ft})}{(7 \text{ ft})} + \frac{(4.8367 \text{ ft})}{2 \times (7 \text{ ft})} \right) - \left[\left(\frac{4 \times (11.34 \text{ ft})}{(7 \text{ ft})} + 3 \right) \times \left(\frac{(4.8367 \text{ ft})}{2 \times (7 \text{ ft})} \right)^3 + \left[\left(\frac{3 \times (11.34 \text{ ft})}{(7 \text{ ft})} + 2 \right) \times \left(\frac{(4.8367 \text{ ft})}{2 \times (7 \text{ ft})} \right)^4 \right] \right] \right]$$

$$M_{max} = 39.412 \text{ kipft}$$

Shear force and Bending moment (z-direction, LRFD)

H_o - Lateral force per length of pile,

$$H_o = \frac{V_z}{1.57 b}$$

$$H_o = \frac{(0.218 \text{ kip})}{1.57 \times (48 \text{ in})}$$

$$H_o = 0.034713 \text{ kip/ft}$$

M_o - Moment per length of pile,

$$M_o = \frac{M_x + (V_z H)}{1.57 b}$$

$$M_o = \frac{(0.645 \text{ kipft}) + ((0.218 \text{ kip}) \times (0 \text{ ft}))}{1.57 \times (48 \text{ in})}$$

$$M_o = 0.10271 \text{ kipft/ft}$$

E - Distance from lateral load to resisting surface,

$$E = \frac{M_o}{H_o}$$

$$E = \frac{(0.10271 \text{ kipft/ft})}{(0.034713 \text{ kip/ft})}$$

$$E = 2.9587 \text{ ft}$$

a - Distance from resting surface to pivot point,

$$a = \frac{(4 M_o L_e) + (3 H_o L_e^2)}{(6 M_o) + (4 H_o L_e)}$$

$$a = \frac{(4 \times (0.10271 \text{ kipft/ft}) \times (7 \text{ ft})) + (3 \times (0.034713 \text{ kip/ft}) \times (7 \text{ ft})^2)}{(6 \times (0.10271 \text{ kipft/ft})) + (4 \times (0.034713 \text{ kip/ft}) \times (7 \text{ ft}))}$$

$$a = 5.0237 \text{ ft}$$

V_{max} - Max shear force located at depth a ,

$$V_{max} = (H_o b) \left[1 - \left[3 \left(\frac{4E}{L_e} + 3 \right) \left(\frac{a}{L_e} \right)^2 + 4 \left(\frac{3E}{L_e} + 2 \right) \left(\frac{a}{L_e} \right)^3 \right] \right]$$

$$V_{max} = ((0.034713 \text{ kip/ft}) \times (48 \text{ in})) \times \left[1 - \left[3 \times \left(\frac{4 \times (2.9587 \text{ ft})}{(7 \text{ ft})} + 3 \right) \times \left(\frac{(5.0237 \text{ ft})}{(7 \text{ ft})} \right)^2 + 4 \times \left(\frac{3 \times (2.9587 \text{ ft})}{(7 \text{ ft})} + 2 \right) \times \left(\frac{(5.0237 \text{ ft})}{(7 \text{ ft})} \right)^3 \right] \right]$$

$$V_{max} = 0.1966 \text{ kip}$$

M_{max} - Max bending moment located at depth $a/2$,

$$M_{max} = (H_o b L_e) \left[\left(\frac{E}{L_e} + \frac{a}{2 L_e} \right) - \left[\left(\frac{4E}{L_e} + 3 \right) \left(\frac{a}{2 L_e} \right)^3 + \left[\left(\frac{3E}{L_e} + 2 \right) \left(\frac{a}{2 L_e} \right)^4 \right] \right] \right]$$

$$M_{max} = ((0.034713 \text{ kip/ft}) \times (48 \text{ in}) \times (7 \text{ ft})) \times \left[\left(\frac{(2.9587 \text{ ft})}{(7 \text{ ft})} + \frac{(5.0237 \text{ ft})}{2 \times (7 \text{ ft})} \right) - \left[\left(\frac{4 \times (2.9587 \text{ ft})}{(7 \text{ ft})} + 3 \right) \times \left(\frac{(5.0237 \text{ ft})}{2 \times (7 \text{ ft})} \right)^3 + \left[\left(\frac{3 \times (2.9587 \text{ ft})}{(7 \text{ ft})} + 2 \right) \times \left(\frac{(5.0237 \text{ ft})}{2 \times (7 \text{ ft})} \right)^4 \right] \right] \right]$$

$$M_{max} = 0.60161 \text{ kipft}$$

Minimum Reinforcement Check (LRFD)

Parameters:

$f'_{ck} = 3 \text{ ksi}$ - Concrete strength,
 $f_{yk} = 60 \text{ ksi}$ - Longitudinal reinforcement strength,
 $\phi = 0.65$ - Reduction factor for axial strength,
 $\alpha = 0.8$ - Alpha factor for axial strength,
 $A_g = 2304 \text{ in}^2$ - Gross area of concrete,

Table 22.4.2.1

Longitudinal reinforcement:

Required reinforcement due to axial load, $A_{st,required}$

22.4.2.2, 10.6.1.1

$A_{st,required}$

$$A_{st,required} = \text{Min} \left[\frac{\frac{P}{\phi \alpha} - (0.85 f'_{ck} A_g)}{f_{yk} - (0.85 f'_{ck})}, (0.08 A_g) \right]$$

$$A_{st,required} = \text{Min} \left[\frac{\frac{(8.48 \text{ kip})}{(0.65) \times (0.8)} - (0.85 \times (3 \text{ ksi}) \times (2304 \text{ in}^2))}{(60 \text{ ksi}) - (0.85 \times (3 \text{ ksi}))}, (0.08 \times (2304 \text{ in}^2)) \right]$$

$$A_{st,required} = -101.98 \text{ in}^2$$

A_{min} - Governing minimum reinforcement area,

$$A_{min} = \text{Max} [A_{st,required}, (0.0018 A_g)]$$

$$A_{min} = \text{Max} [(-101.98 \text{ in}^2), (0.0018 \times (2304 \text{ in}^2))]$$

$$A_{min} = 4.1472 \text{ in}^2$$

n_{rebar} - Required number of reinforcement,

$$n_{rebar} = \frac{A_{min}}{A_{rebar}}$$

$$n_{rebar} = \frac{(4.1472 \text{ in}^2)}{(0.3068 \text{ in}^2)}$$

$$n_{rebar} = 14$$

A_{st} - Actual total reinforcement area,

$$A_{st} = n_{rebar} \frac{\pi d_{bar}^2}{4}$$

$$A_{st} = (14) \times \frac{\pi \times (0.625 \text{ in})^2}{4}$$

$$A_{st} = 4.2951 \text{ in}^2$$

Ratio - Capacity

$$\text{Ratio} = \frac{A_{min}}{A_{st}}$$

$$\text{Ratio} = \frac{(4.1472 \text{ in}^2)}{(4.2951 \text{ in}^2)}$$

$$\text{Ratio} = 0.96556$$

Status: **PASS**
Ratio: **0.970**

25.2.3

s_{rebar} - Minimum spacing of reinforcement,

$$s_{rebar} = \text{Max} [1.5, (1.5 d_{bar})]$$

$$s_{rebar} = \text{Max} [1.5, (1.5 \times (0.625 \text{ in}))]$$

$$s_{rebar} = 1.5 \text{ in}$$

Ties:

25.7.2.2 Since longitudinal reinforcement is \leq No. 10: Use #3(0.375 in)

25.7.2.1 s_{ties} - Maximum spacing of ties,

$$s_{ties} = \text{Min} [(16 d_{bar}), (48 d_{ties}), \text{Min} (D, b)]$$

$$s_{ties} = \text{Min} [(16 \times (0.625 \text{ in})), (48 \times (0.375 \text{ in})), \text{Min} ((48 \text{ in}), (48 \text{ in}))]$$

$$s_{ties} = 10 \text{ in}$$

Summary:

Main reinforcement: **14 - #5 (0.625 in)**

Axial Compression Strength (ACI 318-19, LRFD)22.4.2.2 ϕP_N - Allowable axial compressive strength

$$\phi P_N = \phi 0.80 [(0.85 f'_{ck} [A_g - A_{st}]) + (f_{yk} A_{st})]$$

$$\phi P_N = (0.65) \times 0.80 \times [(0.85 \times (3 \text{ ksi}) \times [(2304 \text{ in}^2) - (4.2951 \text{ in}^2)]) + ((60 \text{ ksi}) \times (4.2951 \text{ in}^2))]$$

$$\phi P_N = 3183.4 \text{ kip}$$

Ratio - Capacity

$$\text{Ratio} = \frac{P}{\phi P_N}$$

$$\text{Ratio} = \frac{(8.48 \text{ kip})}{(3183.4 \text{ kip})}$$

$$\text{Ratio} = 0.0026638$$

Status: **PASS**
Ratio: **0.000****Shear Strength (ACI 318-19, LRFD)****Parameters:**22.5.2.2 $b_w = 48 \text{ in}$ - Effective width,
 d - Effective depth

$$d = 0.80 D$$

$$d = 0.80 \times (48 \text{ in})$$

$$d = 38.4 \text{ in}$$

22.5.5.1.3 λ_s - size effect modification factor

$$\lambda_s = \text{MIN} \left[\sqrt{\frac{2}{1 + \frac{d}{10}}}, 1 \right]$$

$$\lambda_s = \text{MIN} \left[\sqrt{\frac{2}{1 + \frac{(38.4 \text{ in})}{10}}}, 1 \right]$$

$$\lambda_s = 0.64282$$

22.5.5.1.1 The following variables were converted to be consistent with empirical formula $f'_{ck} = 3 \text{ ksi} \rightarrow 3000 \text{ psi}$,
 $V_{c,max}$ - Max shear strength of concrete

$$V_{c,max} = 5 \lambda_s \sqrt{f'_{ck}} b_w d$$

$$V_{c,max} = 5 \times (0.64282) \times \sqrt{(3000 \text{ psi})} \times (48 \text{ in}) \times (38.4 \text{ in})$$

$$V_{c,max} = 324.49 \text{ kip}$$

22.5.5.1.1(a) The following variables were converted to be consistent with empirical formula $f'_{ck} = 3 \text{ ksi} \rightarrow 3000 \text{ psi}$, $P = 8.48 \text{ kip} \rightarrow 8480 \text{ lbf}$,
 $V_{c,a}$ - Shear strength of concrete (a)

$$V_{c,a} = \left[2 \lambda_s \sqrt{f'_{ck}} + \frac{P}{6 A_g} \right] b_w d$$

$$V_{c,a} = \left[2 \times (0.64282) \times \sqrt{(3000 \text{ psi})} + \frac{(8480 \text{ lbf})}{6 \times (2304 \text{ in}^2)} \right] \times (48 \text{ in}) \times (38.4 \text{ in})$$

$$V_{c,a} = 130.92 \text{ kip}$$

22.5.5.1.2 The following variables were converted to be consistent with empirical formula $f'_{ck} = 3 \text{ ksi} \rightarrow 3000 \text{ psi}$,
 $V_{c,b}$ - Shear strength of concrete (b)

$$V_{c,b} = \left[2 \lambda_s \sqrt{f'_{ck}} + (0.05 f'_{ck}) \right] b_w d$$

$$V_{c,b} = \left[2 \times (0.64282) \times \sqrt{(3000 \text{ psi})} + (0.05 \times (3000 \text{ psi})) \right] \times (48 \text{ in}) \times (38.4 \text{ in})$$

$$V_{c,b} = 406.27 \text{ kip}$$

 V_c - Governing shear strength of concrete

$$V_c = \text{Min}[V_{c,max}, V_{c,a}, V_{c,b}]$$

$$V_c = \text{Min}[(324.49 \text{ kip}), (130.92 \text{ kip}), (406.27 \text{ kip})]$$

$$V_c = 130.92 \text{ kip}$$

<p>22.5.1.2</p>	<p>The following variables were converted to be consistent with empirical formula $f'_{ck} = 3 \text{ ksi} \rightarrow 3000 \text{ psi}$, $V_{s,a}$ - Shear strength of steel (a)</p> $V_{s,a} = 8 \sqrt{f'_{ck}} b_w d$ $V_{s,a} = 8 \times \sqrt{(3000 \text{ psi})} \times (48 \text{ in}) \times (38.4 \text{ in})$ $V_{s,a} = 807.65 \text{ kip}$ <p>A_v - Ties rebar area,</p> $A_v = \frac{\pi d_{ties}^2}{4}$ $A_v = \frac{\pi \times (0.375 \text{ in})^2}{4}$ $A_v = 0.11045 \text{ in}^2$ <p>22.5.8.5.3 $V_{s,b}$ - Shear strength of steel (b)</p> $V_{s,b} = \frac{2 A_v f_{yt} d}{s_{ties}}$ $V_{s,b} = \frac{2 \times (0.11045 \text{ in}^2) \times (60 \text{ ksi}) \times (38.4 \text{ in})}{(10 \text{ in})}$ $V_{s,b} = 50.894 \text{ kip}$ <p>V_s - Governing shear strength of steel</p> $V_s = \text{MIN}[V_{s,a}, V_{s,b}]$ $V_s = \text{MIN}[(807.65 \text{ kip}), (50.894 \text{ kip})]$ $V_s = 50.894 \text{ kip}$ <p>22.5.1.1 ϕV_n - Allowable shear strength</p> $\phi V_n = \phi (V_c + V_s)$ $\phi V_n = (0.65) \times ((130.92 \text{ kip}) + (50.894 \text{ kip}))$ $\phi V_n = 118.18 \text{ kip}$ <p>Considering x-direction:</p> <p>$V_{max} = 11.871 \text{ kip}$ - Maximum shear force in the x-direction, Ratio - Capacity</p> $\text{Ratio} = \frac{V_{max}}{\phi V_n}$ $\text{Ratio} = \frac{(11.871 \text{ kip})}{(118.18 \text{ kip})}$ $\text{Ratio} = 0.10045$ <p>Considering z-direction:</p> <p>$V_{max} = 0.1966 \text{ kip}$ - Maximum shear force in the z-direction, Ratio - Capacity</p> $\text{Ratio} = \frac{V_{max}}{\phi V_n}$ $\text{Ratio} = \frac{(0.1966 \text{ kip})}{(118.18 \text{ kip})}$ $\text{Ratio} = 0.0016636$	<p>Status: PASS Ratio: 0.100</p> <p>Status: PASS Ratio: 0.000</p>
	<p>Flexural Strength (ACI 318-19, LFRD)</p> <p>S_m - Section modulus</p> $S_m = \frac{b D^2}{6}$ $S_m = \frac{(48 \text{ in}) \times (48 \text{ in})^2}{6}$ $S_m = 18432 \text{ in}^3$	

<p>14.5.2.1b</p>	<p>$\lambda = 1$ - Concrete modification factor (Normal concrete), Allowable flexural strength: M_n shall be the lesser of: $\phi M_{n,1}$</p> $\phi M_{n,1} = \phi \times 5 \times \lambda \times \sqrt{f'_c} \times S_m$ $\phi M_{n,1} = 0.65 \times 5 \times 1 \times \sqrt{3\text{ksi}} \times 18432.001\text{in}^3$ $\phi M_{n,1} = 273.423\text{kipft}$ <p>$\phi M_{n,2}$</p> $\phi M_{n,2} = \phi \times 0.85 \times f'_c \times S_m$ $\phi M_{n,2} = (0.65) \times 0.85 \times (3\text{ksi}) \times (18432\text{in}^3)$ $\phi M_{n,2} = 2545.9\text{kipft}$ <p>Therefore, ϕM_n - Allowable flexural strength,</p> $\phi M_n = \text{MIN}[\phi M_{n,1}, \phi M_{n,2}]$ $\phi M_n = \text{MIN}[(273.42\text{kipft}), (2545.9\text{kipft})]$ $\phi M_n = 273.42\text{kipft}$ <p>Considering x-direction: $M_{max} = 39.412\text{kipft}$ - Maximum moment in the x-direction, Ratio - Capacity</p> $\text{Ratio} = \frac{M_{max}}{\phi M_n}$ $\text{Ratio} = \frac{(39.412\text{kipft})}{(273.42\text{kipft})}$ $\text{Ratio} = 0.14414$	<p>Status: PASS Ratio: 0.140</p>
	<p>Considering z-direction: $M_{max} = 0.60161\text{kipft}$ - Maximum moment in the z-direction, Ratio - Capacity</p> $\text{Ratio} = \frac{M_{max}}{\phi M_n}$ $\text{Ratio} = \frac{(0.60161\text{kipft})}{(273.42\text{kipft})}$ $\text{Ratio} = 0.0022003$	<p>Status: PASS Ratio: 0.000</p>